

Product datasheet for PH308058

FECH (NM_000140) Human Mass Spec Standard

Product data:

| | |
|---------------------------------------|--|
| Product Type: | Mass Spec Standards |
| Description: | FECH MS Standard C13 and N15-labeled recombinant protein (NP_000131) |
| Species: | Human |
| Expression Host: | HEK293 |
| Expression cDNA Clone or AA Sequence: | RC208058 |
| Predicted MW: | 47.9 kDa |
| Protein Sequence: | >RC208058 protein sequence Red=Cloning site Green=Tags(s) |

MRS LGANMAAALRAAGVLLRDPLASSWRVCQPWRWKSAAAAVTTETAQHAQGAKPQVQPQKRKPKTG
ILMLNMGGPETLGDVHDFLLRFLDRDLMTLP IQNKLAPFIAKRRTPKIQEQYRRIGGGSPIKIWT SKQG
EGMVKLLDELSPNTAPHKYYIGFRYVHPLTEEAIEEMERDGLERAI AFTQYPQYSCSTTGSSLNAIYRYY
NQVGRKPTMKWSTIDRWPTHLL IQCFADHILKELDHFPLEKRSEVVILFSAHSLPMSVVNRGDPYPQEV
SATVQKVMERLEYNPYRLVWQSKVGPMPWLGPTDES IKGLCERGRKNILLVPIAFTSDHIETLYELDI
EYSQVLAKECGVENIRRAESLNGNPLFSKALADLVHSHIQSNELCSKQLT LSCPLCVNPVCRETKSFFTS
QQL

TRTRPLEQKLI SEEDLAANDILDYKDDDDKV

| | |
|------------------|--|
| Tag: | C-Myc/DDK |
| Purity: | > 80% as determined by SDS-PAGE and Coomassie blue staining |
| Concentration: | >0.05 µg/µL as determined by microplate BCA method |
| Labeling Method: | Labeled with [U- ¹³ C ₆ , ¹⁵ N ₄]-L-Arginine and [U- ¹³ C ₆ , ¹⁵ N ₂]-L-Lysine |
| Buffer: | 25 mM Tris-HCl, 100 mM glycine, pH 7.3 |
| Storage: | Store at -80°C. Avoid repeated freeze-thaw cycles. |
| Stability: | Stable for 3 months from receipt of products under proper storage and handling conditions. |
| RefSeq: | NP_000131 |
| RefSeq Size: | 7277 |
| RefSeq ORF: | 1269 |
| Synonyms: | EPP; EPP1; FCE |



[View online »](#)

Locus ID: 2235

UniProt ID: [P22830](#), [Q7KZA3](#)

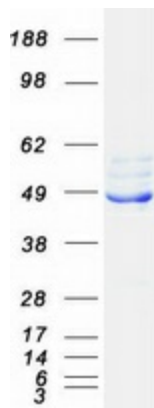
Cytogenetics: 18q21.31

Summary: The protein encoded by this gene is localized to the mitochondrion, where it catalyzes the insertion of the ferrous form of iron into protoporphyrin IX in the heme synthesis pathway. Mutations in this gene are associated with erythropoietic protoporphyria. Two transcript variants encoding different isoforms have been found for this gene. A pseudogene of this gene is found on chromosome 3.[provided by RefSeq, May 2010]

Protein Families: Druggable Genome

Protein Pathways: Metabolic pathways, Porphyrin and chlorophyll metabolism

Product images:



Coomassie blue staining of purified FECH protein (Cat# [TP308058]). The protein was produced from HEK293T cells transfected with FECH cDNA clone (Cat# [RC208058]) using MegaTran 2.0 (Cat# [TT210002]).