

Product datasheet for PH308056

RABEP1 (NM_004703) Human Mass Spec Standard

Product data:

Product Type:	Mass Spec Standards
Description:	RABEP1 MS Standard C13 and N15-labeled recombinant protein (NP_004694)
Species:	Human
Expression Host:	HEK293
Expression cDNA Clone or AA Sequence:	RC208056
Predicted MW:	99.1 kDa
Protein Sequence:	>RC208056 representing NM_004703 Red=Cloning site Green=Tags(s)

MAQPGPASQPDVSLQQRVAELEKINAFLRAQQLEQEFNQKRAKFKELYLAKEEDLKRQNAVLQAAQDD
LGHLRTQLWEAQAEMENIKAIATVSENTKQEAIDEVKRQWREEVASLQAVMKETVRDYEHQFHLRLEQER
TQWAQYRESAEREIADLRRRLSEGQEEENLENEMKKAQEDAELRSVVMPEKEIAALKDKL TEAEDKIK
ELEASKVKELNHYLEAEKSCRTDLEMYAVLNTQKSVLQEDAELRKELHEVCHLLEQERQHNQLKHTW
QKANDQFLESQRLLMRDMQRMEIVLTSEQLRQVEELKKKQDEDEQQLNKRKDHKKADVEEIEKIPVVC
ALTQEESSAQLSNEEEHLDSTRGSVHSLDAGLLPSGDPFSKSDNDMFKDGLRRAQSTDSLGTSGSLQSK
ALGYNYKAKSAGNLDESDFGPLVGADSVSENFDTASLGSQMPSGFMLTKDQERAIKAMTPEQEETASLL
SSVTQGMESAYVSPSGYRLVSETEWNLQKEVHNAGNKLGRRCMCSNYEKQLQGIQIQEAETRDQVKKL
QLMLRQANDQLEKTMKDKQELEDFIKQSSDSSHQISALVLRQAASEILLEELQQGLSQAKRDVQEQMAV
LMQSREQVSEELVRLQKDNDLQGGKHSLSLQQAEDFILPDTTEALRELVLKYREDIINVRTAADHVEE
KLKAEILFLKEQIQAEQCLKENLEETLQLEIENCKEEIASISLKAELERIKVEKGQLESTLREKSSQQLE
SLQEIKISLEEQLKKETAAKATVEQLMFEENKAQRLQTELDVSEQVQRDFVKLSQTLQVQLERIRQADS
LERIRAILNDTKLTDINQLPET

TRTRPLEQKLI SEEDLAANDILDYKDDDDKV

Tag:	C-Myc/DDK
Purity:	> 80% as determined by SDS-PAGE and Coomassie blue staining
Concentration:	>0.05 µg/µL as determined by microplate BCA method
Labeling Method:	Labeled with [U- ¹³ C ₆ , ¹⁵ N ₄]-L-Arginine and [U- ¹³ C ₆ , ¹⁵ N ₂]-L-Lysine
Buffer:	25 mM Tris-HCl, 100 mM glycine, pH 7.3
Storage:	Store at -80°C. Avoid repeated freeze-thaw cycles.
Stability:	Stable for 3 months from receipt of products under proper storage and handling conditions.



[View online »](#)

RefSeq: [NP_004694](#)

RefSeq Size: 5394

RefSeq ORF: 2586

Synonyms: RAB5EP; RABPT5

Locus ID: 9135

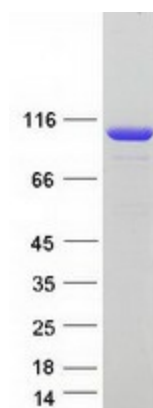
UniProt ID: [Q15276](#)

Cytogenetics: 17p13.2

Summary: Rab effector protein acting as linker between gamma-adaptin, RAB4A and RAB5A. Involved in endocytic membrane fusion and membrane trafficking of recycling endosomes. Involved in KCNH1 channels trafficking to and from the cell membrane (PubMed:22841712). Stimulates RABGEF1 mediated nucleotide exchange on RAB5A. Mediates the traffic of PKD1:PKD2 complex from the endoplasmic reticulum through the Golgi to the cilium (By similarity). [UniProtKB/Swiss-Prot Function]

Protein Pathways: Endocytosis

Product images:



Coomassie blue staining of purified RABEP1 protein (Cat# [TP308056]). The protein was produced from HEK293T cells transfected with RABEP1 cDNA clone (Cat# [RC208056]) using MegaTran 2.0 (Cat# [TT210002]).