

Product datasheet for PH308046

CWC15 (NM_016403) Human Mass Spec Standard

Product data:

Product Type:	Mass Spec Standards
Description:	CWC15 MS Standard C13 and N15-labeled recombinant protein (NP_057487)
Species:	Human
Expression Host:	HEK293
Expression cDNA Clone or AA Sequence:	RC208046
Predicted MW:	26.6 kDa
Protein Sequence:	>RC208046 protein sequence Red=Cloning site Green=Tags(s) MTTAARPTFEPARGGRGKGGDLSQLSKQYSSRDLPSTKIKYRQTTQDAPEEVNRDFRRELEERERAA AREKNRDRPTREHTTSSSVSKPRLDQIPAANLDADDPLTDEEDEDFFEEESDDDDTAALLAELEKIKKER AEEQARKEQEQAEEERIRMENILSGNPLLNLTGPSQPQANFKVKRRWDDVVFKNCAKGVDDQKKDKRF VNDTLRSEFHKKFMEKYIK TRTRPLEQKLISEEDLAANDILDYKDDDDKV
Tag:	C-Myc/DDK
Purity:	> 80% as determined by SDS-PAGE and Coomassie blue staining
Concentration:	>0.05 µg/µL as determined by microplate BCA method
Labeling Method:	Labeled with [U- ¹³ C ₆ , ¹⁵ N ₄]-L-Arginine and [U- ¹³ C ₆ , ¹⁵ N ₂]-L-Lysine
Buffer:	25 mM Tris-HCl, 100 mM glycine, pH 7.3
Storage:	Store at -80°C. Avoid repeated freeze-thaw cycles.
Stability:	Stable for 3 months from receipt of products under proper storage and handling conditions.
RefSeq:	NP_057487
RefSeq Size:	1592
RefSeq ORF:	687
Synonyms:	AD002; C11orf5; Cwf15; HSPC148; ORF5
Locus ID:	51503
UniProt ID:	Q9P013



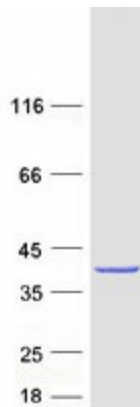
[View online »](#)

Cytogenetics: 11q21

Summary: Involved in pre-mRNA splicing as component of the spliceosome (PubMed:28502770, PubMed:28076346). Component of the PRP19-CDC5L complex that forms an integral part of the spliceosome and is required for activating pre-mRNA splicing.[UniProtKB/Swiss-Prot Function]

Protein Pathways: Spliceosome

Product images:



Coomassie blue staining of purified CWC15 protein (Cat# [TP308046]). The protein was produced from HEK293T cells transfected with CWC15 cDNA clone (Cat# [RC208046]) using MegaTran 2.0 (Cat# [TT210002]).