

Product datasheet for PH308034

WASF2 (NM_006990) Human Mass Spec Standard

Product data:

Product Type:	Mass Spec Standards
Description:	WASF2 MS Standard C13 and N15-labeled recombinant protein (NP_008921)
Species:	Human
Expression Host:	HEK293
Expression cDNA Clone or AA Sequence:	RC208034
Predicted MW:	54.1 kDa
Protein Sequence:	>RC208034 representing NM_006990 Red=Cloning site Green=Tags(s)

MPLVTRNIEPRHLCRQTLPSVRSELECVTNITLANVIRQLGSLSKYAEDIFGELFTQANTFASRVSSLAE
RVDRLQVKVTQLDPKEEEVSLQGINTRKAFRSSTIQDQKLFDRNSLPVPVLETYNTCDTPPPLNNLTPYR
DDGKEALKFYTDPSYFFDLWKEKMLQDTKDIMKEKRKRHRKEKKNPNRGNVNPRIKTRKEEWEKMKMGQ
EFVESKEKLGTSYPTLVYQNGSIGCVENVDASSYPPPPQSDSASSPSPSFSEDLNPPPPAEFSYPVDN
QRGSLAGPKRSSVVSPSHPPPAPPLGSPGPKPGFAPPPAPPPPPPMIGIPPPPPVGFSGPTPPPP
SPPSFPPHPDFAAPPPPPPPAADYPTLPPPLSQPTGGAPPPPPPPPPGPPPPFTGADGQPAIPPL
SDTTKPKSSLPAVSDARSDLLSAIRQGFQLRRVEEQREQEKRDVVGNDVATILSRRIAVEYSDSEDDSSSE
FDEDDWSD

TRTRPLEQKLISEEDLAANDILDYKDDDDKV

Tag:	C-Myc/DDK
Purity:	> 80% as determined by SDS-PAGE and Coomassie blue staining
Concentration:	>0.05 µg/µL as determined by microplate BCA method
Labeling Method:	Labeled with [U- ¹³ C ₆ , ¹⁵ N ₄]-L-Arginine and [U- ¹³ C ₆ , ¹⁵ N ₂]-L-Lysine
Buffer:	25 mM Tris-HCl, 100 mM glycine, pH 7.3
Storage:	Store at -80°C. Avoid repeated freeze-thaw cycles.
Stability:	Stable for 3 months from receipt of products under proper storage and handling conditions.
RefSeq:	NP_008921
RefSeq Size:	4270
RefSeq ORF:	1494



[View online »](#)

Synonyms: dj393P12.2; IMD2; SCAR2; WASF4; WAVE2

Locus ID: 10163

UniProt ID: [Q9Y6W5](#)

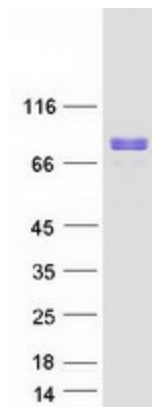
Cytogenetics: 1p36.11

Summary: This gene encodes a member of the Wiskott-Aldrich syndrome protein family. The gene product is a protein that forms a multiprotein complex that links receptor kinases and actin. Binding to actin occurs through a C-terminal verprolin homology domain in all family members. The multiprotein complex serves to transduce signals that involve changes in cell shape, motility or function. The published map location (PMID:10381382) has been changed based on recent genomic sequence comparisons, which indicate that the expressed gene is located on chromosome 1, and a pseudogene may be located on chromosome X. Two transcript variants encoding different isoforms have been found for this gene. [provided by RefSeq, Jan 2011]

Protein Families: Druggable Genome

Protein Pathways: Adherens junction, Fc gamma R-mediated phagocytosis, Regulation of actin cytoskeleton

Product images:



Coomassie blue staining of purified WASF2 protein (Cat# [TP308034]). The protein was produced from HEK293T cells transfected with WASF2 cDNA clone (Cat# [RC208034]) using MegaTran 2.0 (Cat# [TT210002]).