

Product datasheet for PH308031

SMC6L1 (SMC6) (NM_024624) Human Mass Spec Standard

Product data:

Product Type:	Mass Spec Standards
Description:	SMC6 MS Standard C13 and N15-labeled recombinant protein (NP_078900)
Species:	Human
Expression Host:	HEK293
Expression cDNA Clone or AA Sequence:	RC208031
Predicted MW:	126.3 kDa
Protein Sequence:	>RC208031 protein sequence Red=Cloning site Green=Tags(s)

MAKRKEENFSSPKNAKRPRQEELDFDKDGEDECKGTTLTAAEVGIIIESIHLKNFMCHSMLGPFKFGSN
VNFVVGNGSGKSAVLTALIVGLGRAVATNRGSSLKGFVKDGGQNSADISITLRNRGDDAFKASVYGNSI
LIQQHISIDGSRSYKLSATGSVSTRKEELIAILDHFNIQVDNPVSVLTQEMSKQFLQSKNEGDKYKFF
MKATQLEQMKEYSYIMETKERTKEQIHQGEERLTELKRQCVKEERFQSIAGLSTMKTNLESLKHMAW
AVVNEIEKQLNAIRDNIKIGEDRAARLDRKMEEQQVRLNEAEQYKDIQDKLEKISEETNARAPECMALK
ADVVAKKRAYNEAEVLYNRSLNEYKALKKDEQLCKRIEELKSTQDQSLPERLERQKKISWLKERVKAF
QNQENSVNQIEIQFQQAIEKDKEEHGKIKREELDVKHALSYNQRLKELKDSKTDRLKRFGNVPALLEA
IDDAYRQGHFTYKPVGPLGACIHLRDELALAIESCLKGLLQAYCCHNHADERVLQALMKRFYLPGTSRP
PIIVSEFRNEIYDVRHRAAYHPDFPTVLTALIDNAVANSIDMRGIETVLLIKNNSVARAVMQSQKPP
KNCREAFTADGDQVFAGRYSSENTRPKFLSRVDSEISDLENEVENKTAQILNLQQHLSALEKDIKHNE
ELLKRCQLHYKELKMKIRKNISEIRELENIIEHQSDIATLEDEAQENKSKMKMVEEHMEQQKENMEHLK
SLKIEAENKYDAIKFKINQLSELADPLKDELNLADSEVDNQKRGKRHYEEKQKEHLDLTKKKRELDMKE
KELEEKMSQARQICPERIEVEKSASILDKEINRLRQKIQAEHASHGDREEIMRQYQEAARETYLDSLKVR
TLKKFIKLLGEIMEHRFKTYQQFRRLTLRCKLYFDNLLSQRAYCGKMNFDHKNETLSISVQPGEGNKAA
FNDMRALSGGERSFSTVCFILSLWSIAESPFRCLEDFDVMYMDVNRRIAMDILKMAQSQRFRQFILLTP
QSMSSLPSSKLIIRILRMSDPERGQTTLPRFPVTQEEDDDQR

TRTRPLEQKLISEEDLAANDILDYKDDDDKV

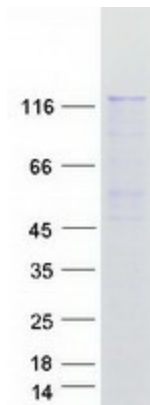
Tag:	C-Myc/DDK
Purity:	> 80% as determined by SDS-PAGE and Coomassie blue staining
Concentration:	>0.05 µg/µL as determined by microplate BCA method
Labeling Method:	Labeled with [U- ¹³ C ₆ , ¹⁵ N ₄]-L-Arginine and [U- ¹³ C ₆ , ¹⁵ N ₂]-L-Lysine
Buffer:	25 mM Tris-HCl, 100 mM glycine, pH 7.3



[View online »](#)

Storage:	Store at -80°C. Avoid repeated freeze-thaw cycles.
Stability:	Stable for 3 months from receipt of products under proper storage and handling conditions.
RefSeq:	NP_078900
RefSeq Size:	5188
RefSeq ORF:	3273
Synonyms:	hSMC6; SMC-6; SMC6L1
Locus ID:	79677
UniProt ID:	Q96SB8 , A0A2S1ZR87
Cytogenetics:	2p24.2
Summary:	Core component of the SMC5-SMC6 complex, a complex involved in DNA double-strand breaks by homologous recombination. The complex may promote sister chromatid homologous recombination by recruiting the SMC1-SMC3 cohesin complex to double-strand breaks. The complex is required for telomere maintenance via recombination in ALT (alternative lengthening of telomeres) cell lines and mediates sumoylation of shelterin complex (telosome) components which is proposed to lead to shelterin complex disassembly in ALT-associated PML bodies (APBs). Required for recruitment of telomeres to PML nuclear bodies. SMC5-SMC6 complex may prevent transcription of episomal DNA, such as circular viral DNA genome (PubMed:26983541).[UniProtKB/Swiss-Prot Function]

Product images:



Coomassie blue staining of purified SMC6 protein (Cat# [TP308031]). The protein was produced from HEK293T cells transfected with SMC6 cDNA clone (Cat# [RC208031]) using MegaTran 2.0 (Cat# [TT210002]).