

## Product datasheet for PH308010

### REM (REM1) (NM\_014012) Human Mass Spec Standard

#### Product data:

Product Type:	Mass Spec Standards
Description:	REM1 MS Standard C13 and N15-labeled recombinant protein (NP_054731)
Species:	Human
Expression Host:	HEK293
Expression cDNA Clone or AA Sequence:	RC208010
Predicted MW:	32.9 kDa
Protein Sequence:	>RC208010 protein sequence <b>Red</b> =Cloning site <b>Green</b> =Tags(s)  MTLNTEQEAKTPLHRRASTPLPLSPRGHQPGRLSTVPSTQSQHPRLGQSASLNPPTQKPSAPDDWSSES SDSEGSWREALYRVLLGDPGVGKTSLASLAFAGKQERDLHEQLGEDVYERTLTVDGEDTTLVVVDTWAEAK LDKSWSEQESCLQGGSAIVYYSIADRGSFESASELRIQLRRTHQADHVPIILVGNKADLARCRESVVEEG RACAVVFDCKFIETSATLQHNVAELFEGVVRQLRLRRRDSAAKEPPAPRRPASLAQRARRFLARLTARSA RRRALKARSKSCHNLAVL  <b>TRTRPLEQKLISEEDLAANDILDYKDDDDKV</b>
Tag:	C-Myc/DDK
Purity:	> 80% as determined by SDS-PAGE and Coomassie blue staining
Concentration:	>0.05 µg/µL as determined by microplate BCA method
Labeling Method:	Labeled with [U- <sup>13</sup> C <sub>6</sub> , <sup>15</sup> N <sub>4</sub> ]-L-Arginine and [U- <sup>13</sup> C <sub>6</sub> , <sup>15</sup> N <sub>2</sub> ]-L-Lysine
Buffer:	25 mM Tris-HCl, 100 mM glycine, pH 7.3
Storage:	Store at -80°C. Avoid repeated freeze-thaw cycles.
Stability:	Stable for 3 months from receipt of products under proper storage and handling conditions.
RefSeq:	<a href="#">NP_054731</a>
RefSeq Size:	1689
RefSeq ORF:	894
Synonyms:	GD:REM; GES
Locus ID:	28954



[View online »](#)

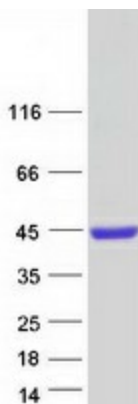
UniProt ID: [O75628](#)

Cytogenetics: 20q11.21

Summary: The protein encoded by this gene is a GTPase and member of the RAS-like GTP-binding protein family. The encoded protein is expressed in endothelial cells, where it promotes reorganization of the actin cytoskeleton and morphological changes in the cells. [provided by RefSeq, Jul 2008]

Protein Families: Druggable Genome

### Product images:



Coomassie blue staining of purified REM1 protein (Cat# [TP308010]). The protein was produced from HEK293T cells transfected with REM1 cDNA clone (Cat# [RC208010]) using MegaTran 2.0 (Cat# [TT210002]).