

Product datasheet for PH307976

Solo (SESTD1) (NM_178123) Human Mass Spec Standard

Product data:

Product Type:	Mass Spec Standards
Description:	SESTD1 MS Standard C13 and N15-labeled recombinant protein (NP_835224)
Species:	Human
Expression Host:	HEK293
Expression cDNA Clone or AA Sequence:	RC207976
Predicted MW:	79.3 kDa
Protein Sequence:	>RC207976 protein sequence Red=Cloning site Green=Tags(s)

MEASVILPILKKKLAFLSGGKDRRSLILTIPLCLEQTNMDELSVTLDFLLSIPSEKCKARGFTVIVDGR
KSQWNVVKTVVVMLQNVVPAEVLVVCVVKPDEFWDKVKVTHFCFWKEKDRLGFEVILVSANKLTRYIEPCQ
LTEDFGGSLTYDHMDWLNKRLVFEKFTKESTSLDELALINNGSDKGNQQEKERSVDLNLPSVDPETVL
QTGHELLSELQQRRFNGSDGGVSWSPMDELQAQPQVMKLLDSLREYTRYQEVCQRQRKRTQLEEIQQK
VMQVVNWLEGGSEQLRAQWIGDSIRASQALQQKHEEIESQHSEWFAVYVELNQQIAALLNAGDEEDLV
ELKSLQQQLSDVCYRQASQLEFRQNLLQAALFHHGVAQDLSQQLDGLLGMLCVDVAPADGASTIQQTLKLL
EEKLKSVDVGLQGLREKQGQLDQISNQASWAYGKDVTIENKENVDHIIQGVMDMQLRKQRCEMDVDRR
LKMLQMVQLFKCEEDAAQAVEWSELLDALLKTHIRLGDDAQETKVLLEKHRKFVDVAQSTYDYGRQLLQ
ATVVLCCQLRCTSRSSGDTLPRLNRVVKQFTIASEERVHREMAIAFHSNAEKILQDCPEEPEAINDEEQ
FDEIEAVGKSLLDRLTVPVVYPDGTEQYFGSPSDMASTAEINIRDRMKLVNLKRQQLRHPENVTTES

TRTRPLEQKLISEEDLAANDILDYKDDDDKV

Tag:	C-Myc/DDK
Purity:	> 80% as determined by SDS-PAGE and Coomassie blue staining
Concentration:	>0.05 µg/µL as determined by microplate BCA method
Labeling Method:	Labeled with [U- 13C6, 15N4]-L-Arginine and [U- 13C6, 15N2]-L-Lysine
Buffer:	25 mM Tris-HCl, 100 mM glycine, pH 7.3
Storage:	Store at -80°C. Avoid repeated freeze-thaw cycles.
Stability:	Stable for 3 months from receipt of products under proper storage and handling conditions.
RefSeq:	NP_835224
RefSeq Size:	10448



[View online »](#)

RefSeq ORF: 2088

Synonyms: SOLO

Locus ID: 91404

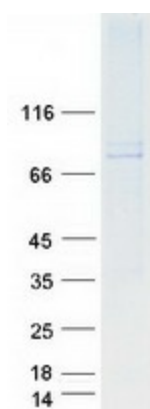
UniProt ID: [Q86VW0](#), [B3KTX3](#)

Cytogenetics: 2q31.2

Summary: May act as the primary docking protein directing membrane turnover and assembly of the transient receptor potential channels TRPC4 and TRPC5. Binds phospholipids such as phosphatidylinositol monophosphates, phosphatidylinositol diphosphates (PIP2s) and phosphatidic acid, but not less polar lipids including phosphatidylcholine, phosphatidylserine, and phosphatidylinositol. The binding to PIP2s is calcium dependent. Might be involved in the plasma membrane localization of CTNNB1.[UniProtKB/Swiss-Prot Function]

Protein Families: Druggable Genome

Product images:



Coomassie blue staining of purified SESTD1 protein (Cat# [TP307976]). The protein was produced from HEK293T cells transfected with SESTD1 cDNA clone (Cat# [RC207976]) using MegaTran 2.0 (Cat# [TT210002]).