

Product datasheet for PH307958

LMBRD1 (NM_018368) Human Mass Spec Standard

Product data:

Product Type:	Mass Spec Standards
Description:	LMBRD1 MS Standard C13 and N15-labeled recombinant protein (NP_060838)
Species:	Human
Expression Host:	HEK293
Expression cDNA Clone or AA Sequence:	RC207958
Predicted MW:	61.4 kDa
Protein Sequence:	>RC207958 protein sequence Red=Cloning site Green=Tags(s)

MATSGAASAELVIGWCIFGLLLLAILAFCWIYVRKYQSRRESEVVSTITAIFSLAIALITSALLPVDIFL
VSYMKNQNGTFKDWANANVSRQIEDTVLYGYTYLVSILFCVFFWIPFVYFYEEKDDDDTSKCTQIKTA
LKYTLGFVVICALLLVGAFVPLNPNKNSTEWKVKSLFEELGSSHGLAALSFSSSLTIGMLAAIT
YTAYGMSALPLNLIKGTRSAAYERLENTEDIEEVEQHIQTIKSKSKDGRPLPARDKRALKQFEERLRTLK
KRERHLEFIENSWWTKFCGALRPLKIVWGIFFILVALLFVISLFLSNLDKALHSAGIDSGFIIFGANLSN
PLNMLLPLLQTVFPLDYILITIIIMYFIFTSMAGIRNIGIWWFVRLYKIRRGTRPQALLFLCMILLI
VLHTSYMIYSLAPQYVYMGSONYLIETNITSDNHKGNSTLSPKRCADAPEDQCTVTRTYLFLHKFWFF
SAAYYFGNWAFLGVFLIGLIVSCCKGKKSVEIGVDESDISDDEPSVYSA

TRTRPLEQKLI SEEDLAANDILDYKDDDDKV

Tag:	C-Myc/DDK
Purity:	> 80% as determined by SDS-PAGE and Coomassie blue staining
Concentration:	>0.05 µg/µL as determined by microplate BCA method
Labeling Method:	Labeled with [U- ¹³ C ₆ , ¹⁵ N ₄]-L-Arginine and [U- ¹³ C ₆ , ¹⁵ N ₂]-L-Lysine
Buffer:	25 mM Tris-HCl, 100 mM glycine, pH 7.3
Storage:	Store at -80°C. Avoid repeated freeze-thaw cycles.
Stability:	Stable for 3 months from receipt of products under proper storage and handling conditions.
RefSeq:	<u>NP_060838</u>
RefSeq Size:	2308
RefSeq ORF:	1620



[View online »](#)

Synonyms: C6orf209; LMBD1; MAHCF; NESI

Locus ID: 55788

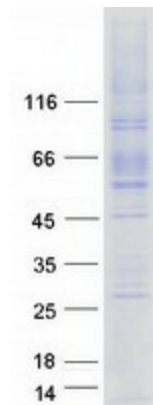
UniProt ID: [Q9NUN5](#)

Cytogenetics: 6q13

Summary: This gene encodes a lysosomal membrane protein that may be involved in the transport and metabolism of cobalamin. This protein also interacts with the large form of the hepatitis delta antigen and may be required for the nucleocytoplasmic shuttling of the hepatitis delta virus. Mutations in this gene are associated with the vitamin B12 metabolism disorder termed, homocystinuria-megaloblastic anemia complementation type F.[provided by RefSeq, Oct 2009]

Protein Families: Transmembrane

Product images:



Coomassie blue staining of purified LMBRD1 protein (Cat# [TP307958]). The protein was produced from HEK293T cells transfected with LMBRD1 cDNA clone (Cat# [RC207958]) using MegaTran 2.0 (Cat# [TT210002]).