

Product datasheet for PH307936

APLF (NM_173545) Human Mass Spec Standard

Product data:

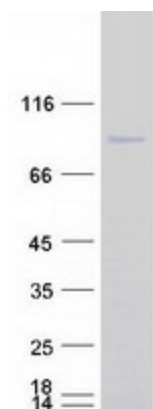
Product Type:	Mass Spec Standards
Description:	APLF MS Standard C13 and N15-labeled recombinant protein (NP_775816)
Species:	Human
Expression Host:	HEK293
Expression cDNA Clone or AA Sequence:	RC207936
Predicted MW:	57 kDa
Protein Sequence:	>RC207936 protein sequence Red=Cloning site Green=Tags(s)
	MSGGFELQPRDGGPRVALAPGETVIGRGPLLGITDKRVSRRHAILEVAGGQLRIKPIHTNPCFYQSSEKS QLLPLKPNLWCYLNPGDSFSLLDVKYIFRILSIPSEVEMQCTLRNSQVLDEDNINLNETPKSPVINLPHET TGASQLEGSTEIAKTQMTPTNSVSFLGENRDCNKQPILAERKRILPTWMLAEHLSQNLSPVAISGGNV IQGSGKEEICKDKSQLNTTQQGRRQLISSGSENTSAEQDTGEECKNTDQEESTISSKEMPQSFSAITLS NTEMNNIKTNAQRNKLP I EELGKVSXHKIATKRTPHKEDAMSCSENCSSAQGDSLQDESQGSSESSN PSNPETLHAKATDSVLQGSEGNKVKRTSCMYGANCYRKNPVHFQHF SHPGDSYGGVQIVGQDETDPRPE CPYGPSCYRKNPQHKIEYRHNTLPVRNVLDEDNDNVGQPNEYDLNDSFLDDEEEDYEPTDESDWEPGKE DEEKEDVEELLKEAKRFMKRK
	TRTRPLEQKLI SEEDLAANDILDYKDDDDKV
Tag:	C-Myc/DDK
Purity:	> 80% as determined by SDS-PAGE and Coomassie blue staining
Concentration:	>0.05 µg/µL as determined by microplate BCA method
Labeling Method:	Labeled with [U- 13C6, 15N4]-L-Arginine and [U- 13C6, 15N2]-L-Lysine
Buffer:	25 mM Tris-HCl, 100 mM glycine, pH 7.3
Storage:	Store at -80°C. Avoid repeated freeze-thaw cycles.
Stability:	Stable for 3 months from receipt of products under proper storage and handling conditions.
RefSeq:	<u>NP_775816</u>
RefSeq Size:	3869
RefSeq ORF:	1533



[View online »](#)

Synonyms:	APFL; C2orf13; PALF; Xip1; ZCCHH1
Locus ID:	200558
UniProt ID:	Q8IW19
Cytogenetics:	2p13.3
Summary:	C2ORF13 is a component of the cellular response to chromosomal DNA single- and double-strand breaks (Iles et al., 2007 [PubMed 17353262]).[supplied by OMIM, Mar 2008]

Product images:



Coomassie blue staining of purified APLF protein (Cat# [TP307936]). The protein was produced from HEK293T cells transfected with APLF cDNA clone (Cat# [RC207936]) using MegaTran 2.0 (Cat# [TT210002]).