

Product datasheet for PH307932

IGJ (JCHAIN) (NM_144646) Human Mass Spec Standard

Product data:

Product Type:	Mass Spec Standards
Description:	IGJ MS Standard C13 and N15-labeled recombinant protein (NP_653247)
Species:	Human
Expression Host:	HEK293
Expression cDNA Clone or AA Sequence:	RC207932
Predicted MW:	18.1 kDa
Protein Sequence:	>RC207932 protein sequence Red=Cloning site Green=Tags(s) MKNHLLFWGVLAVFIKAVHVKAQEDERIVLVDNKCKCARITSRIIRSEDPNEDIVERNIRIIVPLNNRE NISDPTSPLRTRFVYHLSDLCKKCDPTEVELDNQIVTATQSNICDEDSATETCYTYDRNKCYTAVVPLVY GGETKMVETALTPDACYPD TRTRPLEQKLI SEEDLAANDILDYKDDDDKV
Tag:	C-Myc/DDK
Purity:	> 80% as determined by SDS-PAGE and Coomassie blue staining
Concentration:	>0.05 µg/µL as determined by microplate BCA method
Labeling Method:	Labeled with [U- 13C6, 15N4]-L-Arginine and [U- 13C6, 15N2]-L-Lysine
Buffer:	25 mM Tris-HCl, 100 mM glycine, pH 7.3
Storage:	Store at -80°C. Avoid repeated freeze-thaw cycles.
Stability:	Stable for 3 months from receipt of products under proper storage and handling conditions.
RefSeq:	<u>NP_653247</u>
RefSeq Size:	1413
RefSeq ORF:	477
Synonyms:	IGCJ; IGJ; JCH
Locus ID:	3512
UniProt ID:	<u>P01591</u>

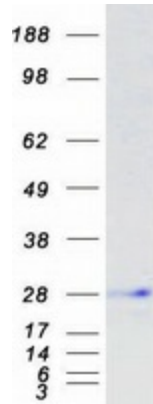


[View online »](#)

Cytogenetics: 4q13.3

Summary: Serves to link two monomer units of either IgM or IgA. In the case of IgM, the J chain-jointed dimer is a nucleating unit for the IgM pentamer, and in the case of IgA it induces larger polymers. It also help to bind these immunoglobulins to secretory component. [UniProtKB/Swiss-Prot Function]

Product images:



Coomassie blue staining of purified JCHAIN protein (Cat# [TP307932]). The protein was produced from HEK293T cells transfected with JCHAIN cDNA clone (Cat# [RC207932]) using MegaTran 2.0 (Cat# [TT210002]).