

Product datasheet for PH307902

TBX21 (NM_013351) Human Mass Spec Standard

Product data:

Product Type:	Mass Spec Standards
Description:	TBX21 MS Standard C13 and N15-labeled recombinant protein (NP_037483)
Species:	Human
Expression Host:	HEK293
Expression cDNA Clone or AA Sequence:	RC207902
Predicted MW:	58.1 kDa
Protein Sequence:	>RC207902 representing NM_013351 Red=Cloning site Green=Tags(s)

MGIVEPGCGDMLTGTEPMPGSDEGRAPGADPQHRFYYPEPGAQDADERRGGGSLGSPYPGGALVPAPPSR
FLGAYAYPPRPQAAGFPGAGESFPPPADAEGYQPGEGYAAPDPRAGLYGPREDYALPAGLEVSGKLRVA
LNNHLLWSKFNQHQTEMIITKQGRRMFPFLSFTVAGLEPTSHYRMFVDVVLVDQHHWRYQSGKWWQCCKA
EGSMPGNRLYVHPDSPNTGAHWMRQEVSFGLKLTNNKGASNNVTQMIVLQSLHKYQPRLHIVEVNDGEP
EAACNASNTHIFTFQETQFIAVTAYQNAEITQLKIDNNPFKGFRENFESMYTSVDTSSIPSPGPNCQFL
GGDHYSPLLPNQYPVPSRFYDLPQAKDVVPQAYWLGAPRDHSYEAFAVSMKPAFLPSAPGPTMSYY
RGQEV LAPGAGWPVAPQYPPKMGPASWFRPMRTLPMEPGGSEGRGPEDQGPPLVWTEIAPIRPESSDS
GLGEGSKRRRVSPYPSSGSSSPAGAPSPFDKEAEGQFYNYFPN

TRTRPLEQKLI SEEDLAANDILDYKDDDDKV

Tag:	C-Myc/DDK
Purity:	> 80% as determined by SDS-PAGE and Coomassie blue staining
Concentration:	>0.05 µg/µL as determined by microplate BCA method
Labeling Method:	Labeled with [U- ¹³ C ₆ , ¹⁵ N ₄]-L-Arginine and [U- ¹³ C ₆ , ¹⁵ N ₂]-L-Lysine
Buffer:	25 mM Tris-HCl, 100 mM glycine, pH 7.3
Storage:	Store at -80°C. Avoid repeated freeze-thaw cycles.
Stability:	Stable for 3 months from receipt of products under proper storage and handling conditions.
RefSeq:	<u>NP_037483</u>
RefSeq Size:	2589
RefSeq ORF:	1605



[View online »](#)

Synonyms: T-bet; T-PET; TBET; TBLYM

Locus ID: 30009

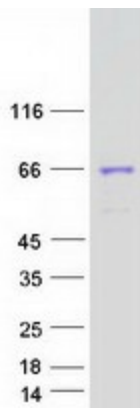
UniProt ID: [Q9UL17](#)

Cytogenetics: 17q21.32

Summary: This gene is a member of a phylogenetically conserved family of genes that share a common DNA-binding domain, the T-box. T-box genes encode transcription factors involved in the regulation of developmental processes. This gene is the human ortholog of mouse Tbx21/Tbet gene. Studies in mouse show that Tbx21 protein is a Th1 cell-specific transcription factor that controls the expression of the hallmark Th1 cytokine, interferon-gamma (IFNG). Expression of the human ortholog also correlates with IFNG expression in Th1 and natural killer cells, suggesting a role for this gene in initiating Th1 lineage development from naive Th precursor cells. [provided by RefSeq, Jul 2008]

Protein Families: Druggable Genome, Transcription Factors

Product images:



Coomassie blue staining of purified TBX21 protein (Cat# [TP307902]). The protein was produced from HEK293T cells transfected with TBX21 cDNA clone (Cat# [RC207902]) using MegaTran 2.0 (Cat# [TT210002]).