

## Product datasheet for PH307901

### PFD6 (PFDN6) (NM\_014260) Human Mass Spec Standard

#### Product data:

Product Type:	Mass Spec Standards
Description:	PFDN6 MS Standard C13 and N15-labeled recombinant protein (NP_055075)
Species:	Human
Expression Host:	HEK293
Expression cDNA Clone or AA Sequence:	RC207901
Predicted MW:	14.6 kDa
Protein Sequence:	>RC207901 protein sequence Red=Cloning site Green=Tags(s)  MAELIQKKLQGEVEKYQQLQKDL SKSMSGRQKLEAQLTENNIVKEELALLDGSNVVFKLLGPVLVKQELG EARATVGKRLDYITAEIKRYESQLRDLERQSEQQRETLAQLQQEFQRAQAAKAGAPGKA  TRTRPLEQKLISEEDLAANDILDYKDDDDKV
Tag:	C-Myc/DDK
Purity:	> 80% as determined by SDS-PAGE and Coomassie blue staining
Concentration:	>0.05 µg/µL as determined by microplate BCA method
Labeling Method:	Labeled with [U- 13C6, 15N4]-L-Arginine and [U- 13C6, 15N2]-L-Lysine
Buffer:	25 mM Tris-HCl, 100 mM glycine, pH 7.3
Storage:	Store at -80°C. Avoid repeated freeze-thaw cycles.
Stability:	Stable for 3 months from receipt of products under proper storage and handling conditions.
RefSeq:	<a href="#">NP_055075</a>
RefSeq Size:	602
RefSeq ORF:	387
Synonyms:	H2-KE2; HKE2; KE-2; PFD6
Locus ID:	10471
UniProt ID:	<a href="#">O15212</a> , <a href="#">Q5STK2</a>
Cytogenetics:	6p21.32



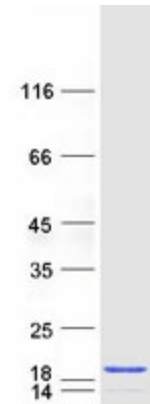
[View online »](#)

**Summary:**

PFDN6 is a subunit of the heteromeric prefoldin complex that chaperones nascent actin (see MIM 102560) and alpha- and beta-tubulin (see MIM 602529 and MIM 191130, respectively) chains pending their transfer to the cytosolic chaperonin containing TCP1 (MIM 186980) (CCT) complex (Hansen et al., 1999 [PubMed 10209023]).[supplied by OMIM, Jul 2010]

**Protein Families:**

Stem cell - Pluripotency

**Product images:**

Coomassie blue staining of purified PFDN6 protein (Cat# [TP307901]). The protein was produced from HEK293T cells transfected with PFDN6 cDNA clone (Cat# [RC207901]) using MegaTran 2.0 (Cat# [TT210002]).