

Product datasheet for PH307872

RFX1 (NM_002918) Human Mass Spec Standard

Product data:

Product Type:	Mass Spec Standards
Description:	RFX1 MS Standard C13 and N15-labeled recombinant protein (NP_002909)
Species:	Human
Expression Host:	HEK293
Expression cDNA Clone or AA Sequence:	RC207872
Predicted MW:	104.7 kDa
Protein Sequence:	>RC207872 protein sequence Red=Cloning site Green=Tags(s)

MATQAYTELQAAPPSQPPQAPPQAQPQPPPPPPAAPQPPQPPTAAATPQPQYVTELSQPQQAQPPGG
QKQYVTELPVAVPAPSQPTGAPTSPAPQQYIVVTYSEGAMRASETVSEASPGSTASQTGVPTQVVQQVQG
TQQRLLVQTSVQAKPGHVSPLQLTNIQVPQQALPTQRLVVQSAAPGSKGGQVSLTVHGTQVHSPPEQSP
VQANSSSKTAGAPTGTVPQQLVHGVQSVPTQERSVQATPQAPKPGVPVQPLTVQGLQPVHVAQEVQ
QLQQVVPVPHVYSSQVQYVEGGDASYTASAIRSSTYSYPETPLYTQTASTSYEEAAGTATQVSTPATSQAV
ASSGSMMPMYVSGSQVVASSASTGAGASNSGGGGGGGGGGGGGGGGGGSGTGGGGSGAGTYVIQGGYM
LGSASQSYSHTRASPATVQWLLDNYETAEGVSLPRSTLYCHYLLHCQEQLKLEPVNAASFGKLIRSVFMG
LRRRLGTRGNSKYHYGLRIKASSPLLRMEDQQHMAMRGQPFQKQRLKPIQKMEGMTNGVAVGQQPS
TGLSDISAQVQQYQQFLDASRSLPDFTELDLQGKVLPEGVGPGDIKAFQVLYREHCEAIVDMVNLQFTL
VETLWKTFRYRNLSPSEAPPLAVHDEAEKRLPKAILVLLSKFEPVLQWTKHCDNVLYQGLVEILIPDVL
RPIPSALTQAIRNFAKSLESWLTHAMVNIPEEMLRVKVAAGAFQTLRRYTSLNHLAQAARAVLQNTAQ
INQMLSDLNRVDFANVQEASWVCRCEDRVVQRLEQDFKVTLQQNSLEQWAAWLDGVVSVQLKPYQGSA
GFPKAAKLFLLKWSFYSSMVIDRLTLRSAASFGSFHLIRLLYDEYMYLIEHRVAQAKGETPIAVMGFEFA
NLATSLNPLDPDKDEEEEEEESEDELQDLSLAAGGESPALGPETLEPPAKLARTDARGLFVQALPSS

TRTRPLEQKLISEEDLAANDILDYKDDDDKV

Tag:	C-Myc/DDK
Purity:	> 80% as determined by SDS-PAGE and Coomassie blue staining
Concentration:	>0.05 µg/µL as determined by microplate BCA method
Labeling Method:	Labeled with [U- 13C6, 15N4]-L-Arginine and [U- 13C6, 15N2]-L-Lysine
Buffer:	25 mM Tris-HCl, 100 mM glycine, pH 7.3
Storage:	Store at -80°C. Avoid repeated freeze-thaw cycles.
Stability:	Stable for 3 months from receipt of products under proper storage and handling conditions.



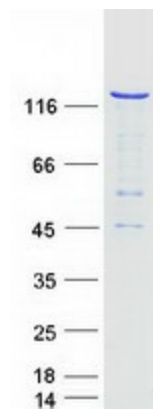
[View online »](#)

RefSeq:	NP_002909
RefSeq Size:	4392
RefSeq ORF:	2937
Synonyms:	EFC; RFX
Locus ID:	5989
UniProt ID:	P22670
Cytogenetics:	19p13.12

Summary: This gene encodes a member of the regulatory factor X (RFX) family of transcription factors, which are characterized by a winged-helix DNA-binding domain. The encoded transcription factor contains an N-terminal activation domain and a C-terminal repression domain, and may activate or repress target gene expression depending on cellular context. This transcription factor has been shown to regulate a wide variety of genes involved in immunity and cancer, including the MHC class II genes and genes that may be involved in cancer progression. This gene exhibits altered expression in glioblastoma and the autoimmune disease systemic lupus erythematosus (SLE). [provided by RefSeq, Jul 2016]

Protein Families: Druggable Genome

Product images:



Coomassie blue staining of purified RFX1 protein (Cat# [TP307872]). The protein was produced from HEK293T cells transfected with RFX1 cDNA clone (Cat# [RC207872]) using MegaTran 2.0 (Cat# [TT210002]).