

Product datasheet for PH307865

LIX1L (NM_153713) Human Mass Spec Standard

Product data:

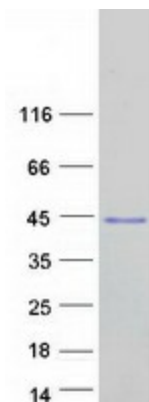
Product Type:	Mass Spec Standards
Description:	LIX1L MS Standard C13 and N15-labeled recombinant protein (NP_714924)
Species:	Human
Expression Host:	HEK293
Expression cDNA Clone or AA Sequence:	RC207865
Predicted MW:	36.4 kDa
Protein Sequence:	>RC207865 representing NM_153713 Red=Cloning site Green=Tags(s) METMRAQRLQPGVGTSGRGTLRALRPGVTGAAAAATATPPAGPPPAPPPAPPPPLLLSGAPGLPLPPGA AGSPA VLREAVEAVVRSFAKHTQGYGRVNVVEALQEFWQMKQSRGADLKNALVYEMVPSNSPPYVCYV TLPGGSCFGSFQFCPTKAEARRSAAKIALMNSVFNEHPSRRITDEFIEKSVSEALASFNGNREEADNPNT GIGAFRFMLESNKGKSMLEFQELMTVFQLLHWNGSLKAMRERQCSRQEVLAHYSHRALDDDIRHQMALDW VSREQSVPGALSRELAstereldeARLAGKELRFHKEKDDILVLAAGQLGNMHSSNC TRTRPLEQKLI SEEDLAANDILDYKDDDDKV
Tag:	C-Myc/DDK
Purity:	> 80% as determined by SDS-PAGE and Coomassie blue staining
Concentration:	>0.05 µg/µL as determined by microplate BCA method
Labeling Method:	Labeled with [U- ¹³ C ₆ , ¹⁵ N ₄]-L-Arginine and [U- ¹³ C ₆ , ¹⁵ N ₂]-L-Lysine
Buffer:	25 mM Tris-HCl, 100 mM glycine, pH 7.3
Storage:	Store at -80°C. Avoid repeated freeze-thaw cycles.
Stability:	Stable for 3 months from receipt of products under proper storage and handling conditions.
RefSeq:	NP_714924
RefSeq Size:	1467
RefSeq ORF:	1011
Locus ID:	128077
UniProt ID:	Q8IVB5 , B3KY58



[View online »](#)

Cytogenetics: 1q21.1

Product images:



Coomassie blue staining of purified LIX1L protein (Cat# [TP307865]). The protein was produced from HEK293T cells transfected with LIX1L cDNA clone (Cat# [RC207865]) using MegaTran 2.0 (Cat# [TT210002]).