

## Product datasheet for PH307857

### GRHL3 (NM\_198174) Human Mass Spec Standard

#### Product data:

Product Type:	Mass Spec Standards
Description:	GRHL3 MS Standard C13 and N15-labeled recombinant protein (NP_937817)
Species:	Human
Expression Host:	HEK293
Expression cDNA Clone or AA Sequence:	RC207857
Predicted MW:	62.2 kDa
Protein Sequence:	>RC207857 protein sequence Red=Cloning site Green=Tags(s)

MRVNGDDDSVAALSFLYDYMGPKKRISSSTGGRNDQGRYYHGMEYETDLTPLESPTHLMKFLTENV  
SGTPEYPDLLKKNLMSLEGALPTPGKAAPLPAGPSKLEAGSVDSYLLPTTDMYDNGSLNSLFESIHGVP  
PTQRWQPDSTFKDDPQESMLFPDILKTSPEPPCPEDYPSLKSDFEYTLGSPKAIHIKSGESPMAYLNKGQ  
FYPVTLRTPAGGKGLALSSNKVKSVMVVFNEKVPVEQLRFWKHWSRQPTAKQRVIDVADCKENFNTV  
EHIEEVAYNALSFVWNVNEEAKVFIGVNCLSTDFSSQKGVKGVPLNLQIDTYDCGLGTERLVHRAVCQIK  
IFCDKGAERKMRDDERKQFRRKVKCPDSSNSGVKGCLLSGFRGNETTYLRPETDLETPPVLFIPNVHFSS  
LQRSGGAAPSAGPSSSNRLPLKRTCSPFTEEFELPSKQAKEGDLQRVLLYVRRETEEVFDALMLKTPDL  
KGLRNAISEKYGFPEENIYKVYKCKRGILVNMDNNI IQHYSNHVAFLLDMGELDGKIQIILKEL

TRTRPLEQKLI SEEDLAANDILDYKDDDDKV

Tag:	C-Myc/DDK
Purity:	> 80% as determined by SDS-PAGE and Coomassie blue staining
Concentration:	>0.05 µg/µL as determined by microplate BCA method
Labeling Method:	Labeled with [U- 13C6, 15N4]-L-Arginine and [U- 13C6, 15N2]-L-Lysine
Buffer:	25 mM Tris-HCl, 100 mM glycine, pH 7.3
Storage:	Store at -80°C. Avoid repeated freeze-thaw cycles.
Stability:	Stable for 3 months from receipt of products under proper storage and handling conditions.
RefSeq:	<u><a href="#">NP_937817</a></u>
RefSeq Size:	2232
RefSeq ORF:	1668



[View online »](#)

Synonyms: SOM; TFCP2L4; VWS2

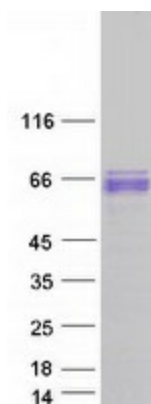
Locus ID: 57822

UniProt ID: [Q8TE85](#)

Cytogenetics: 1p36.11

**Summary:** This gene encodes a member of the grainyhead family of transcription factors. The encoded protein may function as a transcription factor during development, and has been shown to stimulate migration of endothelial cells. Multiple transcript variants encoding distinct isoforms have been identified for this gene.[provided by RefSeq, Aug 2010]

### Product images:



Coomassie blue staining of purified GRHL3 protein (Cat# [TP307857]). The protein was produced from HEK293T cells transfected with GRHL3 cDNA clone (Cat# [RC207857]) using MegaTran 2.0 (Cat# [TT210002]).