

Product datasheet for PH307833

HBM (NM_001003938) Human Mass Spec Standard

Product data:

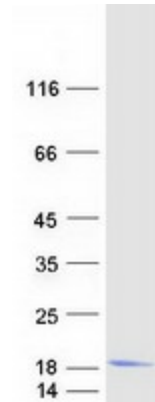
| | |
|---------------------------------------|---|
| Product Type: | Mass Spec Standards |
| Description: | HBM MS Standard C13 and N15-labeled recombinant protein (NP_001003938) |
| Species: | Human |
| Expression Host: | HEK293 |
| Expression cDNA Clone or AA Sequence: | RC207833 |
| Predicted MW: | 15.6 kDa |
| Protein Sequence: | <p>>RC207833 protein sequence</p> <p>Red=Cloning site Green=Tags(s)</p> <p>MLSAQERAQIAQVVDLIAGHEAQFGAELLRLFTVYPSTKVYFPHLSACQDATQLLSHGQRMLAAVGAAV QHVDNLRAALSPLADLHALVLRVDPANFPLLIQCFHVVLAHLQDEFTVQMQAADKFLTGVAVVLTEKY R</p> <p>TRTRPLEQKLISEEDLAANDILDYKDDDDKV</p> |
| Tag: | C-Myc/DDK |
| Purity: | > 80% as determined by SDS-PAGE and Coomassie blue staining |
| Concentration: | >0.05 µg/µL as determined by microplate BCA method |
| Labeling Method: | Labeled with [U- ¹³ C ₆ , ¹⁵ N ₄]-L-Arginine and [U- ¹³ C ₆ , ¹⁵ N ₂]-L-Lysine |
| Buffer: | 25 mM Tris-HCl, 100 mM glycine, pH 7.3 |
| Storage: | Store at -80°C. Avoid repeated freeze-thaw cycles. |
| Stability: | Stable for 3 months from receipt of products under proper storage and handling conditions. |
| RefSeq: | <u>NP_001003938</u> |
| RefSeq Size: | 524 |
| RefSeq ORF: | 423 |
| Synonyms: | HBAP2; HBK |
| Locus ID: | 3042 |
| UniProt ID: | <u>Q6B0K9</u> , <u>A0A1K0FU50</u> |


[View online »](#)

Cytogenetics: 16p13.3

Summary: The human alpha globin gene cluster located on chromosome 16 spans about 30 kb and includes seven loci: 5'- zeta - pseudozeta - mu - pseudoalpha-1 - alpha-2 - alpha-1 - theta - 3'. This gene has an ORF encoding a 141 aa polypeptide which is similar to the delta globins found in reptiles and birds. This locus was originally described as a pseudogene; however, it is currently thought to be a protein-coding gene. [provided by RefSeq, Jul 2008]

Product images:



Coomassie blue staining of purified HBM protein (Cat# [TP307833]). The protein was produced from HEK293T cells transfected with HBM cDNA clone (Cat# [RC207833]) using MegaTran 2.0 (Cat# [TT210002]).