

Product datasheet for PH307832

DCAF12L1 (NM_178470) Human Mass Spec Standard

Product data:

Product Type:	Mass Spec Standards
Description:	DCAF12L1 MS Standard C13 and N15-labeled recombinant protein (NP_848565)
Species:	Human
Expression Host:	HEK293
Expression cDNA Clone or AA Sequence:	RC207832
Predicted MW:	51.1 kDa
Protein Sequence:	>RC207832 protein sequence Red =Cloning site Green =Tags(s)

MAQQQTGSRKRKAPAVEAGAESSPSQGLAAADGEGPLLLKQRRPATYRSMAYHLKVREVGWGPARGLQG
 FDGELRGYAVQRLPELLTERQLELGTVNKVFASQWLSNRQVVCCTKNTLFVVDVESGHIARIPLLRDSE
 ARLAQDQGGCGIHAIELNPSKTLATGGENPNSLAIIYQLPSLDPLCLGDRHGKDWIFAWLSDTVAVS
 GSRDGTVALWRMDPKFDDTVAWHSEVGLPVYAHIRPRDVEAIPRAIINPSNRKVRALACGGKNQELGAV
 SLDGYFHLWKAGSALSRLLSIRLPYFRDNVCLTYCDDMSVYAVGSHSHVSFLDLRQDQQNIRPLCSREGG
 TGVRSLSFYRHIIITVGTGQGSLLFYDVRAQKFLEERASATLESSSGPARRKLRLACGRGWLHNDFWVNY
 FGGMEVFPNALYTHCYNWPEMKLFVAGGPLPAGLHGNYAGLWS

TRTRPLEQKLISEEDLAANDILDYKDDDDKV

Tag:	C-Myc/DDK
Purity:	> 80% as determined by SDS-PAGE and Coomassie blue staining
Concentration:	>0.05 µg/µL as determined by microplate BCA method
Labeling Method:	Labeled with [U- ¹³ C ₆ , ¹⁵ N ₄]-L-Arginine and [U- ¹³ C ₆ , ¹⁵ N ₂]-L-Lysine
Buffer:	25 mM Tris-HCl, 100 mM glycine, pH 7.3
Storage:	Store at -80°C. Avoid repeated freeze-thaw cycles.
Stability:	Stable for 3 months from receipt of products under proper storage and handling conditions.
RefSeq:	<u>NP_848565</u>
RefSeq Size:	3403
RefSeq ORF:	1389
Synonyms:	KIAA1892L; WDR40B


[View online »](#)

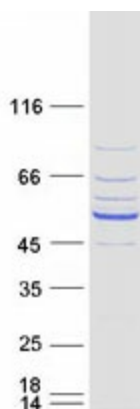
Locus ID: 139170

UniProt ID: [Q5VU92](#)

Cytogenetics: Xq25

Summary: This gene encodes a member of the WD repeat protein family. WD repeats are minimally conserved regions of approximately 40 amino acids typically bracketed by gly-his and trp-aspartate (GH-WD), which may facilitate formation of heterotrimeric or multiprotein complexes. Members of this family are involved in a variety of cellular processes, including cell cycle progression, signal transduction, apoptosis, and gene regulation. [provided by RefSeq, Jul 2008]

Product images:



Coomassie blue staining of purified DCAF12L1 protein (Cat# [TP307832]). The protein was produced from HEK293T cells transfected with DCAF12L1 cDNA clone (Cat# [RC207832]) using MegaTran 2.0 (Cat# [TT210002]).