

Product datasheet for PH307808

SIGLECL1 (SIGLEC12) (NM_053003) Human Mass Spec Standard

Product data:

| | |
|---------------------------------------|--|
| Product Type: | Mass Spec Standards |
| Description: | SIGLEC12 MS Standard C13 and N15-labeled recombinant protein (NP_443729) |
| Species: | Human |
| Expression Host: | HEK293 |
| Expression cDNA Clone or AA Sequence: | RC207808 |
| Predicted MW: | 65 kDa |
| Protein Sequence: | >RC207808 protein sequence Red=Cloning site Green=Tags(s) |

MLLLLLLLPPLLGRVGAKEQKDYLLTMQKSVTVQEGLCVSVLCSFSYPQNGWTASDPVHGYWFRAGDHV
SRNIPVATNPNPARAVQEETDRFRHLLGDPQNKDCTLSIRDTRSDAGTYVFCVERGNMKWNYKYDQLSVN
VTASQDLLSRYRLEVPEVSVTVQEGLCVSVPCSVLYPHYNWTASSPVYGSWFKEGADIPWDIPVATNTPSG
KVQEDTHGRFLLLGDPQTNNCSLSIRDARKGDSGKYYFQVERGSRKWNYYIDKLSVHVTALTHMPTFSIP
GTLESGHPRNLTCVSPWACEQGTPTITWVGASVSSLDPTITRSSMLSLIPQPQDHGTSLTCQVTLPGAG
VTMTRAVRLNISYPPQNLMTVFQGDGTASTLLRNGSALSVLEGQSLHLVCAVDSNPPARLSWTWGLTL
SPSQSSNLGVLELPRVHVKDEGEFTCRAQNPLGSQHISLSLSLQNEYTGKMRPISGVTLGAFGGAGATAL
VFLYFCIIFVVVRSRKKSARPAVGVGDTGMEDANAVRGSASQGPLIESPADDSPPHAPPALATPSPEE
GEIQYASLSFHKARPQYPQEAEITGYEYSEINIPK

TRTRPLEQKLISEEDLAANDILDYKDDDDKV

| | |
|------------------|--|
| Tag: | C-Myc/DDK |
| Purity: | > 80% as determined by SDS-PAGE and Coomassie blue staining |
| Concentration: | >0.05 µg/µL as determined by microplate BCA method |
| Labeling Method: | Labeled with [U- ¹³ C ₆ , ¹⁵ N ₄]-L-Arginine and [U- ¹³ C ₆ , ¹⁵ N ₂]-L-Lysine |
| Buffer: | 25 mM Tris-HCl, 100 mM glycine, pH 7.3 |
| Storage: | Store at -80°C. Avoid repeated freeze-thaw cycles. |
| Stability: | Stable for 3 months from receipt of products under proper storage and handling conditions. |
| RefSeq: | NP_443729 |
| RefSeq Size: | 2258 |
| RefSeq ORF: | 1785 |



[View online »](#)

Synonyms: S2V; Siglec-XII; SIGLECL1; SLG

Locus ID: 89858

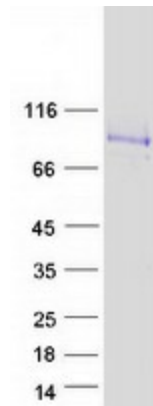
UniProt ID: [Q96PQ1](#)

Cytogenetics: 19q13.41

Summary: Sialic acid-binding immunoglobulin-like lectins (SIGLECs) are a family of cell surface proteins belonging to the immunoglobulin superfamily. They mediate protein-carbohydrate interactions by selectively binding to different sialic acid moieties present on glycolipids and glycoproteins. This gene encodes a member of the SIGLEC3-like subfamily of SIGLECs. Members of this subfamily are characterized by an extracellular V-set immunoglobulin-like domain followed by two C2-set immunoglobulin-like domains, and the cytoplasmic tyrosine-based motifs ITIM and SLAM-like. The encoded protein, upon tyrosine phosphorylation, has been shown to recruit the Src homology 2 domain-containing protein-tyrosine phosphatases SHP1 and SHP2. It has been suggested that the protein is involved in the negative regulation of macrophage signaling by functioning as an inhibitory receptor. This gene is located in a cluster with other SIGLEC3-like genes on 19q13.4. Alternative splicing results in multiple transcript variants. [provided by RefSeq, Aug 2013]

Protein Families: Druggable Genome, Stem cell - Pluripotency, Transmembrane

Product images:



Coomassie blue staining of purified SIGLEC12 protein (Cat# [TP307808]). The protein was produced from HEK293T cells transfected with SIGLEC12 cDNA clone (Cat# [RC207808]) using MegaTran 2.0 (Cat# [TT210002]).