

Product datasheet for PH307788

PKN1 (NM_002741) Human Mass Spec Standard

Product data:

Product Type:	Mass Spec Standards
Description:	PKN1 MS Standard C13 and N15-labeled recombinant protein (NP_002732)
Species:	Human
Expression Host:	HEK293
Expression cDNA Clone or AA Sequence:	RC207788
Predicted MW:	103.8 kDa
Protein Sequence:	>RC207788 representing NM_002741 Red=Cloning site Green=Tags(s)

MASDAVQSEPRSWLLEQLGLAGADLAAPGVQQQLELERERLRREIRKELKLKEGAENLRATTDLGRSL
GPVELLLRGSSRRLDLLHQQLQELHAHVLPDPAATHDGPQSPGAGGPTCSATNLSRVAGLEKQLAIELK
VKQGAENMIQTYNNGSTKDRKLLLTAAQMLQDSKTKIDIIRMLRRLALQAGLENQAAPDDTQGGSPDLGA
VELRIEELRHHFRVEHAVAEGAKNVLRLLSAAKAPDRKAVSEAQEKL TESNQKLGLLREALERLGGELPA
DHPKGRLLREELAAASSAAFSTRLAGPFPATHYSTLCKPAPLTGTLEVRVVGCRDLPETIPWNPTPSMGG
PGTPDSRPPFLSRPARGLYSRSGLSGRSSLKAEAEENTSEVSTVLKLDNTVVGQTSWKPCGPNAWDQSFT
LELERARELELAVFWRDQRGLCALFKLEDFLDNERHEVQLDMEPQGCLVAEVTFRNPVIERIPRLRRQ
KKIFSKQGGKAFQRRARQMNIDVATWVRLRLRIPNATGTGTSPGASPGSEARTTGDISVEKLNLTGSDS
SSPQKSSRDPPSSPSSLSPSIQESTAPELPSETQETPGPALCSPLRKSPLTLEDFKFLAVLGRGHFGKVL
LSEFRPSGELFAIKALKKGDIVARDEVESLMCEKRILAAVTSAGHPFLVNLFGCFQTPHEVCFVMEYSAG
GDLMLHIHSDVSEPRIFYSACVVLGLQFLHEHKIVYRDLKLDNLLDTEGYVKIADFLCKEKGMYGD
RTSTFCGTPEFLAPEVL TDTSYTRAVDWWGLGVLLYEMLVGESPFGDDEEEVFDSIVNDEVRYPRFLSA
EAI GIMRLLRRNPERRLGSSERDAEDVKKQPFRTLGWEALLARRLPPPFVPTLSGRTDISNFDEEFTG
EAPTLSPPRDARPLTAAEQAAFDFDFVAGGC

TRTRPLEQKLI SEEDLAANDILDYKDDDDKV

Tag:	C-Myc/DDK
Purity:	> 80% as determined by SDS-PAGE and Coomassie blue staining
Concentration:	>0.05 µg/µL as determined by microplate BCA method
Labeling Method:	Labeled with [U- ¹³ C ₆ , ¹⁵ N ₄]-L-Arginine and [U- ¹³ C ₆ , ¹⁵ N ₂]-L-Lysine
Buffer:	25 mM Tris-HCl, 100 mM glycine, pH 7.3
Storage:	Store at -80°C. Avoid repeated freeze-thaw cycles.
Stability:	Stable for 3 months from receipt of products under proper storage and handling conditions.



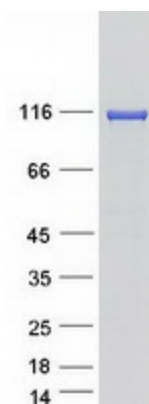
[View online »](#)

RefSeq:	NP_002732
RefSeq Size:	3097
RefSeq ORF:	2826
Synonyms:	DBK; PAK-1; PAK1; PKN; PKN-ALPHA; PRK1; PRKCL1
Locus ID:	5585
UniProt ID:	Q16512
Cytogenetics:	19p13.12

Summary: The protein encoded by this gene belongs to the protein kinase C superfamily. This kinase is activated by Rho family of small G proteins and may mediate the Rho-dependent signaling pathway. This kinase can be activated by phospholipids and by limited proteolysis. The 3-phosphoinositide dependent protein kinase-1 (PDPK1/PDK1) is reported to phosphorylate this kinase, which may mediate insulin signals to the actin cytoskeleton. The proteolytic activation of this kinase by caspase-3 or related proteases during apoptosis suggests its role in signal transduction related to apoptosis. Alternatively spliced transcript variants encoding distinct isoforms have been observed. [provided by RefSeq, Jul 2008]

Protein Families: Druggable Genome, Protein Kinase

Product images:



Coomassie blue staining of purified PKN1 protein (Cat# [TP307788]). The protein was produced from HEK293T cells transfected with PKN1 cDNA clone (Cat# [RC207788]) using MegaTran 2.0 (Cat# [TT210002]).