

## Product datasheet for PH307777

### Intrinsic Factor (GIF) (NM\_005142) Human Mass Spec Standard

#### Product data:

Product Type:	Mass Spec Standards
Description:	GIF MS Standard C13 and N15-labeled recombinant protein (NP_005133)
Species:	Human
Expression Host:	HEK293
Expression cDNA Clone or AA Sequence:	RC207777
Predicted MW:	45.4 kDa
Protein Sequence:	>RC207777 protein sequence Red=Cloning site Green=Tags(s)  MAWFALYLLSLLWATAGTSTQTQSSCSVPSAQEPLVNGIQVLMENSVTSSAYPNPSILIAMNLAGAYNLK AQKLLTYQLMSSDNDLTIGQLGLTIMALTSSCRDPGDKVSILQRQMENWAPSSPNAEASAFYGP SLAIL ALCQKNSEATLPIAVRFAKLLANSSPFNVDTGAMATLALTCMYNKIPVGSEEGYRSLFGQVLKDIVEDI SMKIKDNGIIGDIYSTGLAMQALSVTPEPSKKEWNCKKTTDMILNEIKQKGFHNPMSIAQILPSLKGKTY LDVPQVTCSPDHEVQPTLPSNPGPGPTSASNITVIYTIINNQLRGVELLFNETINVSVKSGSVLLVLEEAA QRKNPMFKFETTMTSWGLVVSSINNI AENVNHKTYWQFLSGVTPLNEGVADYIPFNHEHITANFTQY  TRTRPLEQKLI SEEDLAANDILDYKDDDDKV
Tag:	C-Myc/DDK
Purity:	> 80% as determined by SDS-PAGE and Coomassie blue staining
Concentration:	>0.05 µg/µL as determined by microplate BCA method
Labeling Method:	Labeled with [U- <sup>13</sup> C <sub>6</sub> , <sup>15</sup> N <sub>4</sub> ]-L-Arginine and [U- <sup>13</sup> C <sub>6</sub> , <sup>15</sup> N <sub>2</sub> ]-L-Lysine
Buffer:	25 mM Tris-HCl, 100 mM glycine, pH 7.3
Storage:	Store at -80°C. Avoid repeated freeze-thaw cycles.
Stability:	Stable for 3 months from receipt of products under proper storage and handling conditions.
RefSeq:	<u>NP_005133</u>
RefSeq Size:	1536
RefSeq ORF:	1251
Synonyms:	GIF; IF; IFMH; INF; TCN3
Locus ID:	2694



[View online »](#)

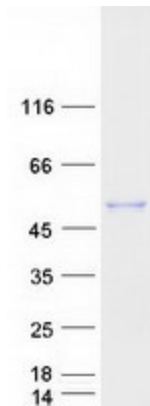
UniProt ID: [P27352](#)

Cytogenetics: 11q12.1

**Summary:** This gene is a member of the cobalamin transport protein family. It encodes a glycoprotein secreted by parietal cells of the gastric mucosa and is required for adequate absorption of vitamin B12. Vitamin B12 is necessary for erythrocyte maturation and mutations in this gene may lead to congenital pernicious anemia. [provided by RefSeq, Jul 2008]

**Protein Families:** Secreted Protein

### Product images:



Coomassie blue staining of purified CBLIF protein (Cat# [TP307777]). The protein was produced from HEK293T cells transfected with CBLIF cDNA clone (Cat# [RC207777]) using MegaTran 2.0 (Cat# [TT210002]).