

## Product datasheet for PH307747

### SEC24D (NM\_014822) Human Mass Spec Standard

#### Product data:

Product Type:	Mass Spec Standards
Description:	SEC24D MS Standard C13 and N15-labeled recombinant protein (NP_055637)
Species:	Human
Expression Host:	HEK293
Expression cDNA Clone or AA Sequence:	RC207747
Predicted MW:	113.1 kDa
Protein Sequence:	>RC207747 protein sequence Red=Cloning site Green=Tags(s)

MSQQGYVATPPYSQPQPGIGLSPPHYGHYGDPSHTASPTGMMKPAGPLGATATRGMLPPGPPPPGPHQFG  
QNGAHATGHPPQRFPGPPPVNNVASSHAPYQPSAQSSYPGP ISTSSVTQLGSQLSAMQINSYSGSMAPPS  
QGPPGPLSATSLQTTPRPPQPSILQPGSQVLPPTTLNGPGASPLPLPMYRPDGLSGPPPPNAQYQPPP  
LPGQTLGAGYPPQQAANSGPQMAGAQLSYGGFPGGPAQMAGPPQPQKKLDPDSIPSPIQVIENDRASRG  
GQYYATNTRGQIPPLVTTDCMIQDQGNASPRFIRCTTYCFPCTSDMAKQAQIPLAAVIKPFATIPSNES  
LYLVNHGESGPVRCNRCKAYMCPFMQFIEGRRYQCGFCNCVNDVPPFYFQHLDHIGRRLDHYEKPELSL  
GSYEYVATLDYCRKSKPPNPPAFIFMIDVSYSNIKNGLVKLICEELKTMLEKIPKEEQEETSAIRVGFIT  
YNKVLHFFNVKSNLAQPQMMVTVDVGEVFPVLLDGFVLVNYQESQSVIHNLDDQIPDMFADSNENETVFP  
VIQAGMEALKAADCPGKLFIFHSSLPTAEAPGKLNRRDDKLVNTDKEKILFQPQTNVYDSLAKDCVAHG  
CSVTLFLFPSQYVDVAVSLGLVPQLTGGTLYKYNFQMHLD RQQLNDLRNDIEKKIGFDAIMRVRTSTGF  
RATDFFGGILMNNTTDVEMAAIDCDKAVTVEFKHDDKLSGALIQCAVLYTTISGQRRRIHNLGLNC  
SSQLADLYKSCETDALINFFAKSAFKAVLHQPLKVIREILVNQTAHMLACYRKNCASPSAASQLILPDSM  
KVLVPMNCLLKNVLLSRPEISTDERAYQRQLVMTMGVADSQFFYPQLLPIHTLDVKSTMLPAAVRCS  
ESRLSEEGIFLLANGLHMFLWLVSSPPELIQGFVNFPSFAHINTDMTLLPEVGNPYSQQLRMIMGIIQQ  
KRPYSMKLTIVKQREQPEMVFRQFLVEDKGLYGGSSYVDFLCCVHKEICQLLN

TRTRPLEQKLI SEEDLAANDILDYKDDDDKV

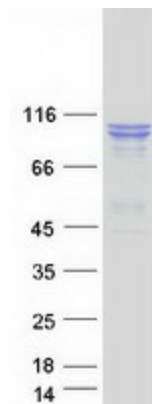
Tag:	C-Myc/DDK
Purity:	> 80% as determined by SDS-PAGE and Coomassie blue staining
Concentration:	>0.05 µg/µL as determined by microplate BCA method
Labeling Method:	Labeled with [U- <sup>13</sup> C <sub>6</sub> , <sup>15</sup> N <sub>4</sub> ]-L-Arginine and [U- <sup>13</sup> C <sub>6</sub> , <sup>15</sup> N <sub>2</sub> ]-L-Lysine
Buffer:	25 mM Tris-HCl, 100 mM glycine, pH 7.3
Storage:	Store at -80°C. Avoid repeated freeze-thaw cycles.



[View online »](#)

Stability:	Stable for 3 months from receipt of products under proper storage and handling conditions.
RefSeq:	<a href="#">NP_055637</a>
RefSeq Size:	4077
RefSeq ORF:	3099
Synonyms:	CLCRP2
Locus ID:	9871
UniProt ID:	<a href="#">O94855</a> , <a href="#">A8K6V0</a>
Cytogenetics:	4q26
Summary:	The protein encoded by this gene is a member of the SEC24 subfamily of the SEC23/SEC24 family, which is involved in vesicle trafficking. The encoded protein has similarity to yeast Sec24p component of COPII. COPII is the coat protein complex responsible for vesicle budding from the ER. This gene product is implicated in the shaping of the vesicle, and also in cargo selection and concentration. Mutations in this gene have been associated with Cole-Carpenter syndrome, a disorder affecting bone formation, resulting in craniofacial malformations and bones that break easily. Alternative splicing results in multiple transcript variants encoding different isoforms. [provided by RefSeq, Dec 2015]

### Product images:



Coomassie blue staining of purified SEC24D protein (Cat# [TP307747]). The protein was produced from HEK293T cells transfected with SEC24D cDNA clone (Cat# [RC207747]) using MegaTran 2.0 (Cat# [TT210002]).