

Product datasheet for PH307736

CAMK1D (NM_153498) Human Mass Spec Standard

Product data:

Product Type:	Mass Spec Standards
Description:	CAMK1D MS Standard C13 and N15-labeled recombinant protein (NP_705718)
Species:	Human
Expression Host:	HEK293
Expression cDNA Clone or AA Sequence:	RC207736
Predicted MW:	42.9 kDa
Protein Sequence:	>RC207736 protein sequence Red=Cloning site Green=Tags(s)
	MARENGESSSSWKKQAEDIKKIFEFKETLGTGAFSEVVLAEKATGKLFVAVKCIKKALKKGESSIENEI AVLRKIKHENIVALEDIYESPNHLYLVMQLVSGGELFDRIVEKGFYTEKDASTLIRQVLDAVYYLHRMGI VHRDLKPENLLYYSQDEESKIMISDFGLSKMEGKGDVMSTACGTPGYVAPEVLAQKPYSKAVDCWSIGVI AYILLCGYPPFYDENDSKLFEQILKAEYEFDSYWDIDISDAKDFIRNLMKDPNKRYTCEQAARHPWIA GDTALNKNIHESVSAQIRKNFAKSKWRQAFNATAVVRHMRKLHLGSSLDSSNASVSSSLSLASQKDCCLAP STLCSFISSSSGVSGVGAERRPRPTTVTAVHSGSK
	TRTRPLEQKLISEEDLAANDILDYKDDDDKV
Tag:	C-Myc/DDK
Purity:	> 80% as determined by SDS-PAGE and Coomassie blue staining
Concentration:	>0.05 µg/µL as determined by microplate BCA method
Labeling Method:	Labeled with [U- ¹³ C ₆ , ¹⁵ N ₄]-L-Arginine and [U- ¹³ C ₆ , ¹⁵ N ₂]-L-Lysine
Buffer:	25 mM Tris-HCl, 100 mM glycine, pH 7.3
Storage:	Store at -80°C. Avoid repeated freeze-thaw cycles.
Stability:	Stable for 3 months from receipt of products under proper storage and handling conditions.
RefSeq:	NP_705718
RefSeq Size:	2242
RefSeq ORF:	1155
Synonyms:	CaM-K1; CaMKID; CKLiK
Locus ID:	57118



[View online »](#)

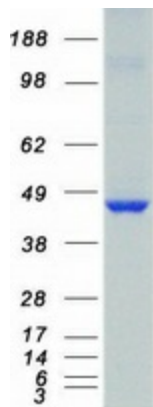
UniProt ID: [Q8IU85](#), [Q5SQQ7](#)

Cytogenetics: 10p13

Summary: This gene is a member of the calcium/calmodulin-dependent protein kinase 1 family, a subfamily of the serine/threonine kinases. The encoded protein is a component of the calcium-regulated calmodulin-dependent protein kinase cascade. It has been associated with multiple processes including regulation of granulocyte function, activation of CREB-dependent gene transcription, aldosterone synthesis, differentiation and activation of neutrophil cells, and apoptosis of erythroleukemia cells. Alternatively spliced transcript variants encoding different isoforms of this gene have been described. [provided by RefSeq, Jan 2015]

Protein Families: Druggable Genome, Protein Kinase

Product images:



Coomassie blue staining of purified CAMK1D protein (Cat# [TP307736]). The protein was produced from HEK293T cells transfected with CAMK1D cDNA clone (Cat# [RC207736]) using MegaTran 2.0 (Cat# [TT210002]).