

Product datasheet for PH307725

TM4SF20 (NM_024795) Human Mass Spec Standard

Product data:

Product Type:	Mass Spec Standards
Description:	TM4SF20 MS Standard C13 and N15-labeled recombinant protein (NP_079071)
Species:	Human
Expression Host:	HEK293
Expression cDNA Clone or AA Sequence:	RC207725
Predicted MW:	25.1 kDa
Protein Sequence:	>RC207725 protein sequence Red=Cloning site Green=Tags(s) MTCCEGWTSCNGFSLLVLLLLGVVNLNVIPLIVSLVEEDQFSQNPISCFEWWFPGIIGAGLMAIPATTMSL TARKRACCNRTGMFLSSFFSVITVIGALYCLISIQALLKGPLMCNPSNSNANCEFSLKNIISDIHPES FNLQWFFNDSCAPPTGFNKPTSNDTMASGWRASSFHFDSEENKHRLIHFSVFLGLLLVGILEVLFGLSQI VIGFLGCLCGVSKRRSQIV TRTRPLEQKLISEEDLAANDILDYKDDDDKV
Tag:	C-Myc/DDK
Purity:	> 80% as determined by SDS-PAGE and Coomassie blue staining
Concentration:	>0.05 µg/µL as determined by microplate BCA method
Labeling Method:	Labeled with [U- ¹³ C ₆ , ¹⁵ N ₄]-L-Arginine and [U- ¹³ C ₆ , ¹⁵ N ₂]-L-Lysine
Buffer:	25 mM Tris-HCl, 100 mM glycine, pH 7.3
Storage:	Store at -80°C. Avoid repeated freeze-thaw cycles.
Stability:	Stable for 3 months from receipt of products under proper storage and handling conditions.
RefSeq:	NP_079071
RefSeq Size:	2310
RefSeq ORF:	687
Synonyms:	PRO994; SLI5; TCCE518
Locus ID:	79853
UniProt ID:	Q53R12



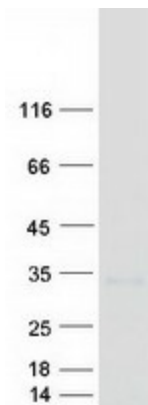
[View online »](#)

Cytogenetics: 2q36.3

Summary: The protein encoded by this gene is a member of the four-transmembrane L6 superfamily. Members of this family function in various cellular processes including cell proliferation, motility, and adhesion via their interactions with integrins. In human brain tissue, this gene is expressed at high levels in the parietal lobe, occipital lobe, hippocampus, pons, white matter, corpus callosum, and cerebellum. Knockout of the homologous gene in mouse results in a neurobehavioral phenotype with suggested enhanced motor coordination. A deletion mutation in the human gene is associated with specific language impairment-5. [provided by RefSeq, Jul 2016]

Protein Families: Transmembrane

Product images:



Coomassie blue staining of purified TM4SF20 protein (Cat# [TP307725]). The protein was produced from HEK293T cells transfected with TM4SF20 cDNA clone (Cat# [RC207725]) using MegaTran 2.0 (Cat# [TT210002]).