

Product datasheet for PH307712

FKBP6 (NM_003602) Human Mass Spec Standard

Product data:

Product Type:	Mass Spec Standards
Description:	FKBP6 MS Standard C13 and N15-labeled recombinant protein (NP_003593)
Species:	Human
Expression Host:	HEK293
Expression cDNA Clone or AA Sequence:	RC207712
Predicted MW:	37.2 kDa
Protein Sequence:	>RC207712 protein sequence Red=Cloning site Green=Tags(s) MGG SA LNQGVLEGGDAPGQSLYERLSQRMLDISGDRGVLKDVIREGAGDLVAPDASV LV KYSGYLEHMDR PFDSNYFRKTPRLMKLGEDITLWGMELGLLSMRRGELARFLFKPNYAYGTLGCPPLIPPNTTVLFEIELL DFLDCAESDKFCALSAEQDQFPLQKVLKVAATEREFGNYLFRQNRFYDAKVRYKRALLLRRSAPPEE QHLVEAAKLPVLLNLSFTYLK LD RPTIALCYGEQALIIDQKNAKALFRCGQACLLLE TE YQKARDFLVRAQ KEQPFNHDINNELK KL ASCYRDYVDKEKEMWHRMFAPCGDGSTAGES TRTRPLEQKLI SEED LAANDILDYKDDDDKV
Tag:	C-Myc/DDK
Purity:	> 80% as determined by SDS-PAGE and Coomassie blue staining
Concentration:	>0.05 µg/µL as determined by microplate BCA method
Labeling Method:	Labeled with [U- ¹³ C ₆ , ¹⁵ N ₄]-L-Arginine and [U- ¹³ C ₆ , ¹⁵ N ₂]-L-Lysine
Buffer:	25 mM Tris-HCl, 100 mM glycine, pH 7.3
Storage:	Store at -80°C. Avoid repeated freeze-thaw cycles.
Stability:	Stable for 3 months from receipt of products under proper storage and handling conditions.
RefSeq:	NP_003593
RefSeq Size:	1640
RefSeq ORF:	981
Synonyms:	FKBP36
Locus ID:	8468



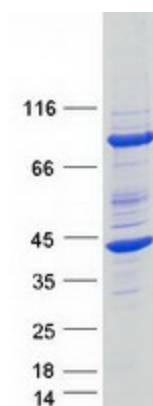
[View online »](#)

UniProt ID: [O75344](#)

Cytogenetics: 7q11.23

Summary: The protein encoded by this gene is a cis-trans peptidyl-prolyl isomerase that may function in immunoregulation and basic cellular processes involving protein folding and trafficking. This gene is located in a chromosomal region that is deleted in Williams-Beuren syndrome. Defects in this gene may cause male infertility. There are multiple pseudogenes for this gene located nearby on chromosome 7. Alternative splicing results in multiple transcript variants. [provided by RefSeq, Jul 2013]

Product images:



Coomassie blue staining of purified FKBP6 protein (Cat# [TP307712]). The protein was produced from HEK293T cells transfected with FKBP6 cDNA clone (Cat# [RC207712]) using MegaTran 2.0 (Cat# [TT210002]).