

Product datasheet for PH307689

CST6 (NM_001323) Human Mass Spec Standard

Product data:

Product Type:	Mass Spec Standards
Description:	CST6 MS Standard C13 and N15-labeled recombinant protein (NP_001314)
Species:	Human
Expression Host:	HEK293
Expression cDNA Clone or AA Sequence:	RC207689
Predicted MW:	16.5 kDa
Protein Sequence:	>RC207689 protein sequence Red =Cloning site Green =Tags(s) MARSNLPLALGLALVAFCLLALPRDARARPQERMVGEIRDLSPPDPQVQKAAQAAVASYNMGSNSIYYFR DTHIKAQSQLVAGIKYFLTMEMGSTDCRKTRVTGDHVDLTTCPLAAGAQQEKLRCDFEVLVVPWQNSSQ LLKHNCVQM TR TRPLE QKL ISEEDLAANDILDYKDDDDKV
Tag:	C-Myc/DDK
Purity:	> 80% as determined by SDS-PAGE and Coomassie blue staining
Concentration:	>0.05 µg/µL as determined by microplate BCA method
Labeling Method:	Labeled with [U- ¹³ C ₆ , ¹⁵ N ₄]-L-Arginine and [U- ¹³ C ₆ , ¹⁵ N ₂]-L-Lysine
Buffer:	25 mM Tris-HCl, 100 mM glycine, pH 7.3
Storage:	Store at -80°C. Avoid repeated freeze-thaw cycles.
Stability:	Stable for 3 months from receipt of products under proper storage and handling conditions.
RefSeq:	NP_001314
RefSeq Size:	618
RefSeq ORF:	447
Synonyms:	ECTD15
Locus ID:	1474
UniProt ID:	Q15828



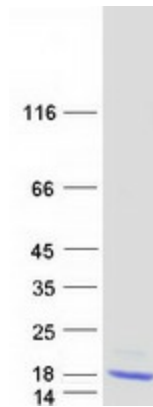
[View online »](#)

Cytogenetics: 11q13.1

Summary: The cystatin superfamily encompasses proteins that contain multiple cystatin-like sequences. Some of the members are active cysteine protease inhibitors, while others have lost or perhaps never acquired this inhibitory activity. There are three inhibitory families in the superfamily, including the type 1 cystatins (stefins), type 2 cystatins and the kininogens. The type 2 cystatin proteins are a class of cysteine proteinase inhibitors found in a variety of human fluids and secretions, where they appear to provide protective functions. This gene encodes a cystatin from the type 2 family, which is down-regulated in metastatic breast tumor cells as compared to primary tumor cells. Loss of expression is likely associated with the progression of a primary tumor to a metastatic phenotype. [provided by RefSeq, Jul 2008]

Protein Families: Secreted Protein

Product images:



Coomassie blue staining of purified CST6 protein (Cat# [TP307689]). The protein was produced from HEK293T cells transfected with CST6 cDNA clone (Cat# [RC207689]) using MegaTran 2.0 (Cat# [TT210002]).