

Product datasheet for PH307685

NGAL (LCN2) (NM_005564) Human Mass Spec Standard

Product data:

Product Type:	Mass Spec Standards
Description:	LCN2 MS Standard C13 and N15-labeled recombinant protein (NP_005555)
Species:	Human
Expression Host:	HEK293
Expression cDNA Clone or AA Sequence:	RC207685
Predicted MW:	22.6 kDa
Protein Sequence:	>RC207685 protein sequence Red=Cloning site Green=Tags(s) MPLGLLWLGLALLGALHAQAQDSTSDLIPAPPLSKVPLQQNFQDNQFQGKWYVVGLAGNAILREDKDPQK MYATIYELKEDKSYNVTSVLFRKKKCDYWIRTFVPGCQPGFTLGNIKSYPLTSYLVRVSTNYNQHAM VFFKKVSQNREYFKITLYGRTKELTSELKENFIRFSKSLGLPENHIVFPVPIDQCIDG TRTRPLEQKLISEEDLAANDILDYKDDDDKV
Tag:	C-Myc/DDK
Purity:	> 80% as determined by SDS-PAGE and Coomassie blue staining
Concentration:	>0.05 µg/µL as determined by microplate BCA method
Labeling Method:	Labeled with [U- ¹³ C ₆ , ¹⁵ N ₄]-L-Arginine and [U- ¹³ C ₆ , ¹⁵ N ₂]-L-Lysine
Buffer:	25 mM Tris-HCl, 100 mM glycine, pH 7.3
Storage:	Store at -80°C. Avoid repeated freeze-thaw cycles.
Stability:	Stable for 3 months from receipt of products under proper storage and handling conditions.
RefSeq:	NP_005555
RefSeq Size:	840
RefSeq ORF:	594
Synonyms:	24p3; MSFI; NGAL; p25
Locus ID:	3934
UniProt ID:	P80188



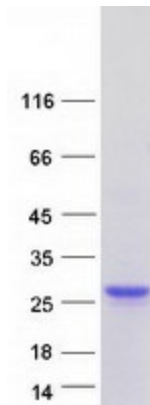
[View online »](#)

Cytogenetics: 9q34.11

Summary: This gene encodes a protein that belongs to the lipocalin family. Members of this family transport small hydrophobic molecules such as lipids, steroid hormones and retinoids. The protein encoded by this gene is a neutrophil gelatinase-associated lipocalin and plays a role in innate immunity by limiting bacterial growth as a result of sequestering iron-containing siderophores. The presence of this protein in blood and urine is an early biomarker of acute kidney injury. This protein is thought to be involved in multiple cellular processes, including maintenance of skin homeostasis, and suppression of invasiveness and metastasis. Mice lacking this gene are more susceptible to bacterial infection than wild type mice. [provided by RefSeq, Sep 2015]

Protein Families: Secreted Protein

Product images:



Coomassie blue staining of purified LCN2 protein (Cat# [TP307685]). The protein was produced from HEK293T cells transfected with LCN2 cDNA clone (Cat# [RC207685]) using MegaTran 2.0 (Cat# [TT210002]).