

Product datasheet for PH307645

MRPL47 (NM_177988) Human Mass Spec Standard

Product data:

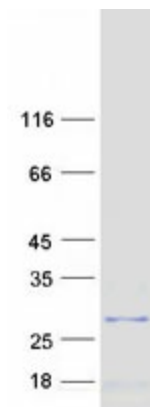
Product Type:	Mass Spec Standards
Description:	MRPL47 MS Standard C13 and N15-labeled recombinant protein (NP_817125)
Species:	Human
Expression Host:	HEK293
Expression cDNA Clone or AA Sequence:	RC207645
Predicted MW:	27.1 kDa
Protein Sequence:	>RC207645 protein sequence Red=Cloning site Green=Tags(s) MAAAGLALLCRRVSSALKSSRSLITPQVPACTGLLHTTLSRKGLEEFDDPKNWGQEKVKSAAWTCQQL RNKSNEDLHKLWYVLLKERNMLLTLEQEAQRQLPMPSPERLDKVVDSMDALDKVVQEREDALRLLTQTGQ ERARPGAWRRDIFGRIIWHKFKQWVIPWHLNKRYNKRFFALPYVDHFLRLEREKRARIKARKENLERKK AKILLKKFPHLAEAQKSSLV TRTRPLEQKLISEEDLAANDILDYKDDDDKV
Tag:	C-Myc/DDK
Purity:	> 80% as determined by SDS-PAGE and Coomassie blue staining
Concentration:	>0.05 µg/µL as determined by microplate BCA method
Labeling Method:	Labeled with [U- ¹³ C ₆ , ¹⁵ N ₄]-L-Arginine and [U- ¹³ C ₆ , ¹⁵ N ₂]-L-Lysine
Buffer:	25 mM Tris-HCl, 100 mM glycine, pH 7.3
Storage:	Store at -80°C. Avoid repeated freeze-thaw cycles.
Stability:	Stable for 3 months from receipt of products under proper storage and handling conditions.
RefSeq:	NP_817125
RefSeq Size:	1076
RefSeq ORF:	693
Synonyms:	CGI-204; L47mt; MRP-L47; NCM1
Locus ID:	57129
UniProt ID:	Q9HD33


[View online »](#)

Cytogenetics: 3q26.33

Summary: Mammalian mitochondrial ribosomal proteins are encoded by nuclear genes and help in protein synthesis within the mitochondrion. Mitochondrial ribosomes (mitoribosomes) consist of a small 28S subunit and a large 39S subunit. They have an estimated 75% protein to rRNA composition compared to prokaryotic ribosomes, where this ratio is reversed. Another difference between mammalian mitoribosomes and prokaryotic ribosomes is that the latter contain a 5S rRNA. Among different species, the proteins comprising the mitoribosome differ greatly in sequence, and sometimes in biochemical properties, which prevents easy recognition by sequence homology. This gene encodes a 39S subunit protein. This gene is immediately adjacent to the gene for BAF complex 53 kDa subunit protein a (BAF53a), in a tail-to-tail orientation. Two transcript variants encoding different protein isoforms have been identified. [provided by RefSeq, Jul 2008]

Product images:



Coomassie blue staining of purified MRPL47 protein (Cat# [TP307645]). The protein was produced from HEK293T cells transfected with MRPL47 cDNA clone (Cat# [RC207645]) using MegaTran 2.0 (Cat# [TT210002]).