

Product datasheet for PH307621

DOK2 (NM_003974) Human Mass Spec Standard

Product data:

Product Type:	Mass Spec Standards
Description:	DOK2 MS Standard C13 and N15-labeled recombinant protein (NP_003965)
Species:	Human
Expression Host:	HEK293
Expression cDNA Clone or AA Sequence:	RC207621
Predicted MW:	45.4 kDa
Protein Sequence:	>RC207621 protein sequence Red=Cloning site Green=Tags(s)
	MGDGAVKQGFLYLQQQTFGKKWRRFGASLYGGSDCALARLELQEGPEKPRRCEAARKVIRLSDCLRVAE AGGEASSPRDTSAFFLETKERLYLLAAPAAERGDWVQAICLLAFPGQRKELSGPEGKQSRPCMEENELYS SAVTVGPHKEFAVTMRPTEASERCHLRGSYTLRAGESALELWGGPEPGTQLYDWPYRFLRRFGRDKVTF FEAGRRCVSGEGNFEFETRQNEIFLALAEAISAQKNAAPATPQPATIPASLPRPDSYSRPHDSLPP PSPTTPVPAPRPRGQEGEYAVPFDAVARSLGKNFRGILAVPPQLLADPLYDSIEETLPPRPDHIYDEPEG VAALSLYDSPQEPRGEAWRRQATADRDPAQLQHVQPAGQDFSASGWQPGTEYDNVVLKKGPK
	TRTRPLEQKLISEEDLAANDILDYKDDDDKV
Tag:	C-Myc/DDK
Purity:	> 80% as determined by SDS-PAGE and Coomassie blue staining
Concentration:	>0.05 µg/µL as determined by microplate BCA method
Labeling Method:	Labeled with [U- ¹³ C ₆ , ¹⁵ N ₄]-L-Arginine and [U- ¹³ C ₆ , ¹⁵ N ₂]-L-Lysine
Buffer:	25 mM Tris-HCl, 100 mM glycine, pH 7.3
Storage:	Store at -80°C. Avoid repeated freeze-thaw cycles.
Stability:	Stable for 3 months from receipt of products under proper storage and handling conditions.
RefSeq:	<u>NP_003965</u>
RefSeq Size:	1870
RefSeq ORF:	1236
Synonyms:	p56DOK; p56dok-2
Locus ID:	9046



[View online »](#)

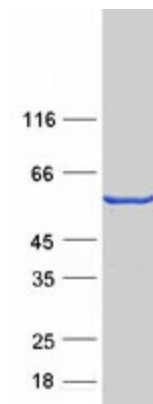
UniProt ID: [O60496](#)

Cytogenetics: 8p21.3

Summary: The protein encoded by this gene is constitutively tyrosine phosphorylated in hematopoietic progenitors isolated from chronic myelogenous leukemia (CML) patients in the chronic phase. It may be a critical substrate for p210(bcr/abl), a chimeric protein whose presence is associated with CML. This encoded protein binds p120 (RasGAP) from CML cells. [provided by RefSeq, Jul 2008]

Protein Families: Druggable Genome

Product images:



Coomassie blue staining of purified DOK2 protein (Cat# [TP307621]). The protein was produced from HEK293T cells transfected with DOK2 cDNA clone (Cat# [RC207621]) using MegaTran 2.0 (Cat# [TT210002]).