

Product datasheet for PH307618

LSAMP (NM_002338) Human Mass Spec Standard

Product data:

Product Type:	Mass Spec Standards
Description:	LSAMP MS Standard C13 and N15-labeled recombinant protein (NP_002329)
Species:	Human
Expression Host:	HEK293
Expression cDNA Clone or AA Sequence:	RC207618
Predicted MW:	37.4 kDa
Protein Sequence:	<p>>RC207618 protein sequence</p> <p>Red=Cloning site Green=Tags(s)</p> <p>MVRRVQPDQRKQLPLVLLRLLCLLPTGLPVRSDVDFNRGTDNITVRQGDAILRCVVEDKNSKVAWLNRSGL IFAGHDKWSLDPRVELEKRHSLEYSLRIQKVDVYDEGSYTCVQTQHEPKTSQVYLIVQVPPKISNISSD VTVNEGSNVTLCMANGRPEPVITWRHLTPTGREFEGEEYLEILGITREQSGKYECKAANEVSSADVKQ VKYTVNYPPTITESKSNEATTGRQASLKCEASVPAPDFEYRDDTRINSANGLEIKSTEGQSSLTVTNV TEEHYGNYTCVAANKLGVTNASLVLFPRGSGVINGISLAVPLWLLAASLLCLLSKC</p> <p>TRTRPLEQKLISEEDLAANDILDYKDDDDKV</p>
Tag:	C-Myc/DDK
Purity:	> 80% as determined by SDS-PAGE and Coomassie blue staining
Concentration:	>0.05 µg/µL as determined by microplate BCA method
Labeling Method:	Labeled with [U- ¹³ C ₆ , ¹⁵ N ₄]-L-Arginine and [U- ¹³ C ₆ , ¹⁵ N ₂]-L-Lysine
Buffer:	25 mM Tris-HCl, 100 mM glycine, pH 7.3
Storage:	Store at -80°C. Avoid repeated freeze-thaw cycles.
Stability:	Stable for 3 months from receipt of products under proper storage and handling conditions.
RefSeq:	<u>NP_002329</u>
RefSeq Size:	9478
RefSeq ORF:	1014
Synonyms:	IGLON3; LAMP
Locus ID:	4045


[View online »](#)

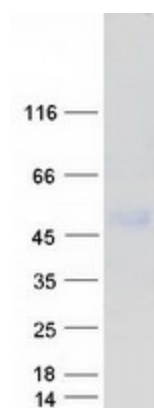
UniProt ID: Q13449, B7Z661

Cytogenetics: 3q13.31

Summary: This gene encodes a member of the immunoglobulin LAMP, OBCAM and neurotrimin (IgLON) family of proteins. The encoded preproprotein is proteolytically processed to generate a neuronal surface glycoprotein. This protein may act as a selective homophilic adhesion molecule during axon guidance and neuronal growth in the developing limbic system. The encoded protein may also function as a tumor suppressor and may play a role in neuropsychiatric disorders. Alternative splicing results in multiple transcript variants, at least one of which encodes a preproprotein that is proteolytically processed. [provided by RefSeq, Jan 2016]

Protein Families: Transmembrane

Product images:



Coomassie blue staining of purified LSAMP protein (Cat# [TP307618]). The protein was produced from HEK293T cells transfected with LSAMP cDNA clone (Cat# [RC207618]) using MegaTran 2.0 (Cat# [TT210002]).