

Product datasheet for PH307601

Somatostatin (SST) (NM_001048) Human Mass Spec Standard

Product data:

Product Type:	Mass Spec Standards
Description:	SST MS Standard C13 and N15-labeled recombinant protein (NP_001039)
Species:	Human
Expression Host:	HEK293
Expression cDNA Clone or AA Sequence:	RC207601
Predicted MW:	12.74 kDa
Protein Sequence:	>RC207601 representing NM_001048 Red=Cloning site Green=Tags(s) MLSCRLQCALAALSIVLALGCVTGAPSDPRLRQFLQKSLAAAAGKQELAKYFLAELLSEPNQTENDALEP EDLSQAAEQDEMRLQLQRSANSNPAMAPRERKAGCKNFFWKTFTSC TRTRPLEQKLISEEDLAANDILDYKDDDDKV
Tag:	C-Myc/DDK
Purity:	> 80% as determined by SDS-PAGE and Coomassie blue staining
Concentration:	>0.05 µg/µL as determined by microplate BCA method
Labeling Method:	Labeled with [U- 13C6, 15N4]-L-Arginine and [U- 13C6, 15N2]-L-Lysine
Buffer:	25 mM Tris-HCl, 100 mM glycine, pH 7.3
Storage:	Store at -80°C. Avoid repeated freeze-thaw cycles.
Stability:	Stable for 3 months from receipt of products under proper storage and handling conditions.
RefSeq:	NP_001039
RefSeq Size:	665
RefSeq ORF:	348
Synonyms:	SMST; SST1
Locus ID:	6750
UniProt ID:	P61278
Cytogenetics:	3q27.3



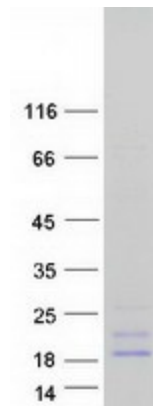
[View online »](#)

Summary:

The hormone somatostatin has active 14 aa and 28 aa forms that are produced by alternate cleavage of the single preproprotein encoded by this gene. Somatostatin is expressed throughout the body and inhibits the release of numerous secondary hormones by binding to high-affinity G-protein-coupled somatostatin receptors. This hormone is an important regulator of the endocrine system through its interactions with pituitary growth hormone, thyroid stimulating hormone, and most hormones of the gastrointestinal tract. Somatostatin also affects rates of neurotransmission in the central nervous system and proliferation of both normal and tumorigenic cells. [provided by RefSeq, Jul 2008]

Protein Families:

Druggable Genome, ES Cell Differentiation/IPS, Secreted Protein

Product images:

Coomassie blue staining of purified SST protein (Cat# [TP307601]). The protein was produced from HEK293T cells transfected with SST cDNA clone (Cat# [RC207601]) using MegaTran 2.0 (Cat# [TT210002]).