

Product datasheet for **PH307585**

FCER1G (NM_004106) Human Mass Spec Standard

Product data:

Product Type:	Mass Spec Standards
Description:	FCER1G MS Standard C13 and N15-labeled recombinant protein (NP_004097)
Species:	Human
Expression Host:	HEK293
Expression cDNA Clone or AA Sequence:	RC207585
Predicted MW:	9.8 kDa
Protein Sequence:	>Peptide sequence encoded by RC207585 Blue=ORF Red=Cloning site Green=Tag(s) MIPAVVLLLLLLVEQAAALGEPQLCYILDAILFLYGIVLTLLYCRLKVIQVRKAAITSYEKSDGVYTGL STRNQETYETLKHEKPPQ TRTRPLEQKLISEEDLAANDILDYKDDDDKV Recombinant protein using RC207585 also available, TP307585
Tag:	C-Myc/DDK
Purity:	> 80% as determined by SDS-PAGE and Coomassie blue staining
Concentration:	>0.05 µg/µL as determined by microplate BCA method
Labeling Method:	Labeled with [U- 13C6, 15N4]-L-Arginine and [U- 13C6, 15N2]-L-Lysine
Buffer:	25 mM Tris-HCl, 100 mM glycine, pH 7.3
Storage:	Store at -80°C. Avoid repeated freeze-thaw cycles.
Stability:	Stable for 3 months from receipt of products under proper storage and handling conditions.
RefSeq:	NP_004097
RefSeq Size:	591
RefSeq ORF:	261
Synonyms:	FCRG
Locus ID:	2207
UniProt ID:	P30273



[View online »](#)

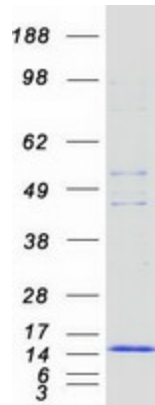
Cytogenetics: 1q23.3

Summary: The high affinity IgE receptor is a key molecule involved in allergic reactions. It is a tetramer composed of 1 alpha, 1 beta, and 2 gamma chains. The gamma chains are also subunits of other Fc receptors. [provided by RefSeq, Jul 2008]

Protein Families: Transmembrane

Protein Pathways: Asthma, Fc epsilon RI signaling pathway, Natural killer cell mediated cytotoxicity

Product images:



Coomassie blue staining of purified FCER1G protein (Cat# [TP307585]). The protein was produced from HEK293T cells transfected with FCER1G cDNA clone (Cat# [RC207585]) using MegaTran 2.0 (Cat# [TT210002]).