

Product datasheet for PH307571

Spasmolytic Polypeptide (TFF2) (NM_005423) Human Mass Spec Standard

Product data:

Product Type:	Mass Spec Standards
Description:	TFF2 MS Standard C13 and N15-labeled recombinant protein (NP_005414)
Species:	Human
Expression Host:	HEK293
Expression cDNA Clone or AA Sequence:	RC207571
Predicted MW:	14.3 kDa
Protein Sequence:	>RC207571 protein sequence Red=Cloning site Green=Tags(s) MGRRDAQLLAALLVLLGLCALAGSEKSPQCQSRLSPHNRTNCGFPGITSDQCQFDNGCCFDSSVTGVPWCF HPLPKQESDQCVMESDRRRCGYPGISPEECASRKCCFSNFI FEVPWCF FPKSVEDCHY TRTRPLEQKLISEEDLAANDILDYKDDDDKV
Tag:	C-Myc/DDK
Purity:	> 80% as determined by SDS-PAGE and Coomassie blue staining
Concentration:	>0.05 µg/µL as determined by microplate BCA method
Labeling Method:	Labeled with [U- 13C6, 15N4]-L-Arginine and [U- 13C6, 15N2]-L-Lysine
Buffer:	25 mM Tris-HCl, 100 mM glycine, pH 7.3
Storage:	Store at -80°C. Avoid repeated freeze-thaw cycles.
Stability:	Stable for 3 months from receipt of products under proper storage and handling conditions.
RefSeq:	<u>NP_005414</u>
RefSeq Size:	717
RefSeq ORF:	387
Synonyms:	SML1; SP
Locus ID:	7032
UniProt ID:	<u>Q03403</u>
Cytogenetics:	21q22.3



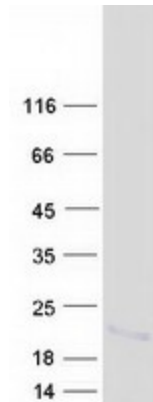
[View online »](#)

Summary:

Members of the trefoil family are characterized by having at least one copy of the trefoil motif, a 40-amino acid domain that contains three conserved disulfides. They are stable secretory proteins expressed in gastrointestinal mucosa. Their functions are not defined, but they may protect the mucosa from insults, stabilize the mucus layer and affect healing of the epithelium. The encoded protein inhibits gastric acid secretion. This gene and two other related trefoil family member genes are found in a cluster on chromosome 21. [provided by RefSeq, Jul 2008]

Protein Families:

Druggable Genome, Secreted Protein

Product images:

Coomassie blue staining of purified TFF2 protein (Cat# [TP307571]). The protein was produced from HEK293T cells transfected with TFF2 cDNA clone (Cat# [RC207571]) using MegaTran 2.0 (Cat# [TT210002]).