

Product datasheet for PH307561

Peripherin (PRPH) (NM_006262) Human Mass Spec Standard

Product data:

Product Type:	Mass Spec Standards
Description:	PRPH MS Standard C13 and N15-labeled recombinant protein (NP_006253)
Species:	Human
Expression Host:	HEK293
Expression cDNA Clone or AA Sequence:	RC207561
Predicted MW:	53.7 kDa
Protein Sequence:	>RC207561 protein sequence Red=Cloning site Green=Tags(s)

MSHHPSGLRAGFSSTSYRRTFGPPPSLSPGAFSYSSSRFSSSRLLGSASPSSSVRLGSFRSPRAGAGAL
LRLPSERLDFSMALNQEFLATRSNEKQELQELNDRFANFIEKVRFLQQAALRGELSQARGQEPARA
DQLCQQLRELRRLELLGRERDRVQVERDGLAEDLAALKQRLEEEETRKREDAEHNLVLFKRDVDDATLS
RLELERKIESLMDEIEFLKKLHEEELRDLQVSVESQQVQVEVEATVKPELTAALRDIRAQYESIAAKNL
QEAEWYKSKYADLSDAANRNHEALRQAKQEMNESRRQIQSLTCEVDGLRGTNEALLRQLRELEEQFALE
AGGYQAGAARLEEELRQLKEEMARHLREYQELNVKMLDIEIATYRKLLEGEESRISVPVHSFASLNIK
TTVPEVEPPQDHSRKTVLIKTIETRNGEVVTESQKEQRSELDKSSAHSY

TRTRPLEQKLISEEDLAANDILDYKDDDDKV

Tag:	C-Myc/DDK
Purity:	> 80% as determined by SDS-PAGE and Coomassie blue staining
Concentration:	>0.05 µg/µL as determined by microplate BCA method
Labeling Method:	Labeled with [U- ¹³ C ₆ , ¹⁵ N ₄]-L-Arginine and [U- ¹³ C ₆ , ¹⁵ N ₂]-L-Lysine
Buffer:	25 mM Tris-HCl, 100 mM glycine, pH 7.3
Storage:	Store at -80°C. Avoid repeated freeze-thaw cycles.
Stability:	Stable for 3 months from receipt of products under proper storage and handling conditions.
RefSeq:	<u>NP_006253</u>
RefSeq Size:	1833
RefSeq ORF:	1410
Synonyms:	NEF4; PRPH1



[View online »](#)

Locus ID: 5630

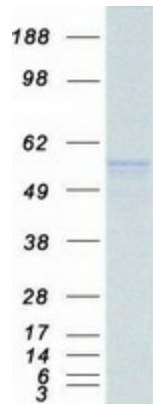
UniProt ID: [P41219](#), [B3KWQ6](#)

Cytogenetics: 12q13.12

Summary: This gene encodes a cytoskeletal protein found in neurons of the peripheral nervous system. The encoded protein is a type III intermediate filament protein with homology to other cytoskeletal proteins such as desmin, and is a different protein that the peripherin found in photoreceptors. Mutations in this gene have been associated with susceptibility to amyotrophic lateral sclerosis. [provided by RefSeq, Jul 2008]

Protein Pathways: Amyotrophic lateral sclerosis (ALS)

Product images:



Coomassie blue staining of purified PRPH protein (Cat# [TP307561]). The protein was produced from HEK293T cells transfected with PRPH cDNA clone (Cat# [RC207561]) using MegaTran 2.0 (Cat# [TT210002]).