

Product datasheet for PH307550

DNA Polymerase iota (POLI) (NM_007195) Human Mass Spec Standard

Product data:

Product Type:	Mass Spec Standards
Description:	POLI MS Standard C13 and N15-labeled recombinant protein (NP_009126)
Species:	Human
Expression Host:	HEK293
Expression cDNA Clone or AA Sequence:	RC207550
Predicted MW:	80.3 kDa
Protein Sequence:	>RC207550 protein sequence Red =Cloning site Green =Tags(s) MELADVGAASSQGVHDQVLPNASSRVIVHVDLDCFYAQVEMISNPELKD KPLGVQKYL VVTCNYEA RKLGVKKLMNVRDAKEKCPQLVLVNGEDLTRYREMSYKVELLEEFSPVVERLGFDEFVLDLTEMVEKRL QQLQSDDEL SAVTVSGHVYNNQSI NLLDVLHIRLLVGSQIAAEMREAMYNQLGLTG CAGVASNKLLAKLVS GVFKPNQQT VLLPESCQHLI HSLNHIKEIPGIGYKTAKCLEALGINSVRDLQTFSPKILEKELGISVAQR IQKLSFGEDNSP VILSGPPQSFSEEDSFKKCSSEVEAKNKEELLASLLNRVCQDGRKPHTVRLIIRRY S SEKHYGRESRQCPIPSHVIQKLG TGNVDVMTMPVDILMKLFRNMVNVKMPFHLTLLSVCF CNLKALNTAK KGLIDY YLMP SLSTTSRSGKHSFKMKDTHMEDFPKDKETNRDFLPSGRIESTRTRESPLD TTNFSKEKDI NEFP L CSLPEGVDQEVFKQLPVDIQEEILSGKSREKFQGGKSVSCPLHASRGVLSFFSKKQMQDIPINPR DHLSSSKQYSSVSPCEPGTSGFNSSSSSYMSSQKDYSYLLDNRLKDERISQGPKEPQGFHF TNSNPAVSA FHSFPNLQSEQLFSRNHTTDSHKQTVATDSHEGLTENREPDSVDEKITFP SDIDPQVFYELPEAVQKELL AEWKRAGSDFHIGHK TRTRPLEQKLI SEEDLAANDILDYKDDDDKV
Tag:	C-Myc/DDK
Purity:	> 80% as determined by SDS-PAGE and Coomassie blue staining
Concentration:	>0.05 µg/µL as determined by microplate BCA method
Labeling Method:	Labeled with [U- 13C6, 15N4]-L-Arginine and [U- 13C6, 15N2]-L-Lysine
Buffer:	25 mM Tris-HCl, 100 mM glycine, pH 7.3
Storage:	Store at -80°C. Avoid repeated freeze-thaw cycles.
Stability:	Stable for 3 months from receipt of products under proper storage and handling conditions.
RefSeq:	<u>NP_009126</u>



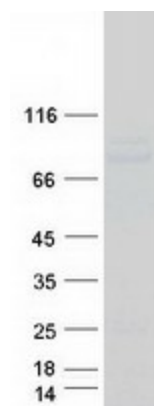
[View online »](#)

RefSeq Size:	6074
RefSeq ORF:	2145
Synonyms:	eta2; RAD3OB; RAD30B
Locus ID:	11201
UniProt ID:	Q9UNA4
Cytogenetics:	18q21.2

Summary: The protein encoded by this gene is an error-prone DNA polymerase involved in DNA repair. The encoded protein promotes DNA synthesis across lesions in the template DNA, which other polymerases cannot do. The encoded polymerase inserts deoxynucleotides across lesions and then relies on DNA polymerase zeta to extend the nascent DNA strand to bypass the lesion. [provided by RefSeq, May 2017]

Protein Families: Druggable Genome

Product images:



Coomassie blue staining of purified POLI protein (Cat# [TP307550]). The protein was produced from HEK293T cells transfected with POLI cDNA clone (Cat# [RC207550]) using MegaTran 2.0 (Cat# [TT210002]).