

## Product datasheet for PH307548

### DDAH1 (NM\_012137) Human Mass Spec Standard

#### Product data:

Product Type:	Mass Spec Standards
Description:	DDAH1 MS Standard C13 and N15-labeled recombinant protein (NP_036269)
Species:	Human
Expression Host:	HEK293
Expression cDNA Clone or AA Sequence:	RC207548
Predicted MW:	31.1 kDa
Protein Sequence:	>RC207548 protein sequence <b>Red</b> =Cloning site <b>Green</b> =Tags(s)  MAGLGHPAAFGRATHAVVRALPESLGQHALRSAKGEVDVARAERQHQLYVGVLGSKLGLQVVELPADES LPDCVFVEDVAVVCEETALITRPGAPSRRKEVDMMEALEKLQLNIVEMKDENATLDGGDVLFTGREFFV GLSKRTNQRGAELADTFKDYAVSTVPVADGLHLKSFCSMAGPNLIAIGSSESAQKALKIMQMSDHRYD KLTVPDDIAANCIYLNIPNKGHVLLHRTPEEYPESAKVYEKLDHMLIPVSMSELEKVDGLLTCCSVLIN KKVDS  <b>TRTRPLEQKLISEEDLAANDILDYKDDDDKV</b>
Tag:	C-Myc/DDK
Purity:	> 80% as determined by SDS-PAGE and Coomassie blue staining
Concentration:	>0.05 µg/µL as determined by microplate BCA method
Labeling Method:	Labeled with [U- <sup>13</sup> C <sub>6</sub> , <sup>15</sup> N <sub>4</sub> ]-L-Arginine and [U- <sup>13</sup> C <sub>6</sub> , <sup>15</sup> N <sub>2</sub> ]-L-Lysine
Buffer:	25 mM Tris-HCl, 100 mM glycine, pH 7.3
Storage:	Store at -80°C. Avoid repeated freeze-thaw cycles.
Stability:	Stable for 3 months from receipt of products under proper storage and handling conditions.
RefSeq:	<a href="#">NP_036269</a>
RefSeq Size:	3991
RefSeq ORF:	855
Synonyms:	DDAH; DDAH-1; DDAHI; HEL-S-16
Locus ID:	23576



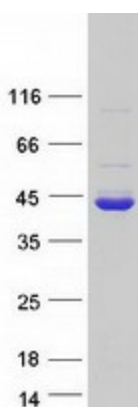
[View online »](#)

UniProt ID: [O94760](#), [B2R644](#)

Cytogenetics: 1p22.3

Summary: This gene belongs to the dimethylarginine dimethylaminohydrolase (DDAH) gene family. The encoded enzyme plays a role in nitric oxide generation by regulating cellular concentrations of methylarginines, which in turn inhibit nitric oxide synthase activity. [provided by RefSeq, Jul 2008]

### Product images:



Coomassie blue staining of purified DDAH1 protein (Cat# [TP307548]). The protein was produced from HEK293T cells transfected with DDAH1 cDNA clone (Cat# [RC207548]) using MegaTran 2.0 (Cat# [TT210002]).