

Product datasheet for PH307546

Calcium independent Phospholipase A2 (PLA2G6) (NM_003560) Human Mass Spec Standard

Product data:

Product Type:	Mass Spec Standards
Description:	PLA2G6 MS Standard C13 and N15-labeled recombinant protein (NP_003551)
Species:	Human
Expression Host:	HEK293
Expression cDNA Clone or AA Sequence:	RC207546
Predicted MW:	89.7 kDa
Protein Sequence:	>RC207546 representing NM_003560 Red=Cloning site Green=Tags(s)

MQFFGRLVNTFSGVTNLFNPFVKEVAVADYTSSEDRVREEGQLILFQNTPNRTWDCVLVNPRNSQSGFR
LFQLELEADALVNFHQYSSQLLPFYESSPQVLHTEVLQHLTDLIRNHPWSVAHLAVELGIRECFHHSRI
ISCANCAENEEGCTPLHLACRKGDEILVELVQYCHTQMDVTDYKGETVFHYAVQGDNSQVLQLLGRNAV
AGLNQVNNQGLTPLHLACQLGKQEMVRVLLCNARCNIIMPNGYPIHSAMKFSQKGAEMIISMDSSQIH
SKDPRYGASPLHWAKNAEMARMLLKRGCVNNTSSAGNTALHVAVMRNRFDCAIVLLTHGANADARGEHG
NTPHLAMSKDNVEMIKALIVFGAEVDPNDFGETPTFLASKIGRLVTRKAILLLRTVGAEYCFPPIHG
VPAEQGSAAHPHPFSLERAQPPISLNNLELQDLMHISRARKPAFILGSMRDEKRTHDHLCLDGGGVKG
LIIQLLIAIEKASGVATKDLFDWVAGTSTGGILALAILHSKSMAYMRGMYFRMKDEVFRGSRPYESGPL
EEFLKREFGEHTKMTDVRKPKVMLTGTLSDRQPAELHLFRNYDAPETVREPRFNQNVNLRPPAQPSDQLV
WRAARSSGAAPTYFRPNRFLDGLLANNPTLDAMTEIHEYNDLIRKQANKVKKLSIVVSLGTGRSPQ
VPVTCVDVFRPSNPWELAKTVFGAKELGKMVVDCCDTPDGRAVDRARAWCEMVGIQYFRLNPQLGTDIML
DEVSDTVLVNALWETEVIYEHREEFQKLIQLLLSP

TRTRPLEQKLISEEDLAANDILDYKDDDDKV

Tag:	C-Myc/DDK
Purity:	> 80% as determined by SDS-PAGE and Coomassie blue staining
Concentration:	>0.05 µg/µL as determined by microplate BCA method
Labeling Method:	Labeled with [U- ¹³ C ₆ , ¹⁵ N ₄]-L-Arginine and [U- ¹³ C ₆ , ¹⁵ N ₂]-L-Lysine
Buffer:	25 mM Tris-HCl, 100 mM glycine, pH 7.3
Storage:	Store at -80°C. Avoid repeated freeze-thaw cycles.
Stability:	Stable for 3 months from receipt of products under proper storage and handling conditions.
RefSeq:	NP_003551



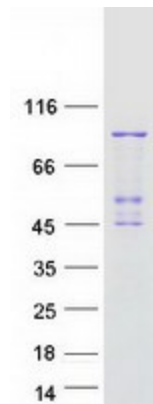
[View online »](#)

RefSeq Size:	3239
RefSeq ORF:	2418
Synonyms:	Cal-PLA2; GVI; INAD1; iPLA2; IPLA2-VIA; iPLA2beta; NBIA2; NBIA2A; NBIA2B; PARK14; PLA2; PNPLA9
Locus ID:	8398
UniProt ID:	O60733
Cytogenetics:	22q13.1

Summary: The protein encoded by this gene is an A2 phospholipase, a class of enzyme that catalyzes the release of fatty acids from phospholipids. The encoded protein may play a role in phospholipid remodelling, arachidonic acid release, leukotriene and prostaglandin synthesis, fas-mediated apoptosis, and transmembrane ion flux in glucose-stimulated B-cells. Several transcript variants encoding multiple isoforms have been described, but the full-length nature of only three of them have been determined to date. [provided by RefSeq, Dec 2010]

Protein Pathways: alpha-Linolenic acid metabolism, Arachidonic acid metabolism, Ether lipid metabolism, Fc epsilon RI signaling pathway, Fc gamma R-mediated phagocytosis, Glycerophospholipid metabolism, GnRH signaling pathway, Linoleic acid metabolism, Long-term depression, MAPK signaling pathway, Metabolic pathways, Vascular smooth muscle contraction, VEGF signaling pathway

Product images:



Coomassie blue staining of purified PLA2G6 protein (Cat# [TP307546]). The protein was produced from HEK293T cells transfected with PLA2G6 cDNA clone (Cat# [RC207546]) using MegaTran 2.0 (Cat# [TT210002]).