

Product datasheet for PH307524

Neurologin 1 (NLGN1) (NM_014932) Human Mass Spec Standard

Product data:

Product Type:	Mass Spec Standards
Description:	NLGN1 MS Standard C13 and N15-labeled recombinant protein (NP_055747)
Species:	Human
Expression Host:	HEK293
Expression cDNA Clone or AA Sequence:	RC207524
Predicted MW:	92 kDa
Protein Sequence:	>RC207524 protein sequence Red=Cloning site Green=Tags(s)

MALPRCTWPNYVWRAVMACLVHRGLGAPLTL CMLGCLLQAGHVL S QKLDDVDPLVATNFGKIRGIKELN
NEILGPVIQFLGVPYAAPPTGERRFQPPEPPSPWSDIRNATQFAPVCPQNIIDGRLPEVMLPVWFTNNLD
VVSSYVQDQSEDCLYLNIIYVPTEDDIRDSGGPKPVMVYIHGGSYMEGTGNLYDGSVLASYGNVIVITVNY
RLGVLGFLSTGDQAAKGN YGLLDLIQALRWTS ENIGFFGGDPLRITVFGSGAGGSCVNL TL SHYSEGNR
WSNSTKGLFQRAIAQSGTALSSWAVSFQPAKYARMLATKVCNVSDTVELVECLQKKPYKELVDQDIQPA
RYHIAFGPVIDGDVIPDDPQILMEQGEFLNYDIMLGVNQGEGLKFVENIVSDDDGISASDFDFAVSNFVD
NLYGYPEGKDVLRETIKFMYTDWADRHNPETRRKTL LALF TDHQWVAPAVATADLHSNFGSPTYFYAFYH
HCQTDQVPAWADAAHGDEVYVYLGIPMIGPTELFPCNFSKNDVMLS AVVMTYWTNFAKTGDPNPVPQDT
KF IHTKPNRFEEVAWTRY SQKQQLYHIGLKPRVKEHYRANKVN LWELVPHLHNLNDISQY TSTTTKVP
STDITFRPTRKNSVPVTS AFPTAKQDDPKQQSPFSVDQRDYSTE LSVTIAVGASLLFLN ILAFAALYYK
KDKRRHDVHRRCS PQRTTNDLTHAQEEEEIMSLQMKHTDL DHECESIHPHEVVLRTACPPDYTLAMRRSP
DDVPLMTPNTITMIPNTIPGIQPLHTFNTFTGGQNNTLPHPHPHSHSTTRV

TRTRPLEQKLI SEEDLAANDILDYKDDDDKV

Tag:	C-Myc/DDK
Purity:	> 80% as determined by SDS-PAGE and Coomassie blue staining
Concentration:	>0.05 µg/µL as determined by microplate BCA method
Labeling Method:	Labeled with [U- ¹³ C ₆ , ¹⁵ N ₄]-L-Arginine and [U- ¹³ C ₆ , ¹⁵ N ₂]-L-Lysine
Buffer:	25 mM Tris-HCl, 100 mM glycine, pH 7.3
Storage:	Store at -80°C. Avoid repeated freeze-thaw cycles.
Stability:	Stable for 3 months from receipt of products under proper storage and handling conditions.
RefSeq:	<u>NP_055747</u>



[View online »](#)

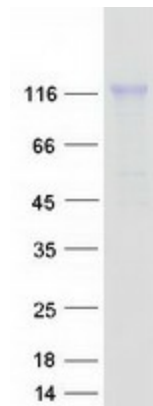
RefSeq Size: 4947
RefSeq ORF: 2469
Synonyms: NL1
Locus ID: 22871
UniProt ID: [Q8N2Q7](#)
Cytogenetics: 3q26.31

Summary: This gene encodes a member of a family of neuronal cell surface proteins. Members of this family may act as splice site-specific ligands for beta-neurexins and may be involved in the formation and remodeling of central nervous system synapses. [provided by RefSeq, Jul 2008]

Protein Families: Druggable Genome, Transmembrane

Protein Pathways: Cell adhesion molecules (CAMs)

Product images:



Coomassie blue staining of purified NLGN1 protein (Cat# [TP307524]). The protein was produced from HEK293T cells transfected with NLGN1 cDNA clone (Cat# [RC207524]) using MegaTran 2.0 (Cat# [TT210002]).