

Product datasheet for PH307523

KLF15 (NM_014079) Human Mass Spec Standard

Product data:

Product Type:	Mass Spec Standards
Description:	KLF15 MS Standard C13 and N15-labeled recombinant protein (NP_054798)
Species:	Human
Expression Host:	HEK293
Expression cDNA Clone or AA Sequence:	RC207523
Predicted MW:	44 kDa
Protein Sequence:	>RC207523 protein sequence Red=Cloning site Green=Tags(s)

MVDHLLPVDEFSSPKCPVGYLGDRLVGRRAYHMLPSPVSEDDSDASSPCSCSSPDSQALCSCYGGGLGT
ESQDSILDFFLLSQATLGSGGGSSIGASSGPVAVGWPWRRAAAPVKGEHFCLPEFPLGDPDDVPRPFQPT
LEEIEEFLEENMEPGVKEVPEGNSKDLDACSQLSAGPHKSHLHPGSSGRERCSPPPGGASAGGAQGPGGG
PTPDGPIPVLLQIQPVVVKQESGTGPASPGQAPENVKVAQLLVNIQGGTFALVPQVVPSSNLNLPKSFVR
IAPVPIAAKPVGSGPLGPGPAGLLMGQKFPKNPAAELIKMHKCTFPGCSKMYTKSSHLKAHLRRHTGEKP
FACTWPGCGWRF SRSDLSRHRSSHSGVKPYQCPVCEKKFARSDDL SKHIKVHRFPRSSRSVRSVN

TRTRPLEQKLI SEEDLAANDILDYKDDDDKV

Tag:	C-Myc/DDK
Purity:	> 80% as determined by SDS-PAGE and Coomassie blue staining
Concentration:	>0.05 µg/µL as determined by microplate BCA method
Labeling Method:	Labeled with [U- ¹³ C ₆ , ¹⁵ N ₄]-L-Arginine and [U- ¹³ C ₆ , ¹⁵ N ₂]-L-Lysine
Buffer:	25 mM Tris-HCl, 100 mM glycine, pH 7.3
Storage:	Store at -80°C. Avoid repeated freeze-thaw cycles.
Stability:	Stable for 3 months from receipt of products under proper storage and handling conditions.
RefSeq:	NP_054798
RefSeq Size:	2539
RefSeq ORF:	1248
Synonyms:	KKLF
Locus ID:	28999



[View online »](#)

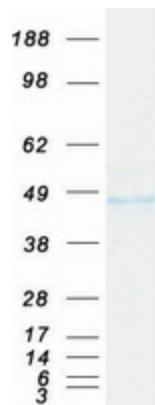
UniProt ID: [Q9UIH9](#)

Cytogenetics: 3q21.3

Summary: Transcriptional regulator that binds to the GA element of the CLCNKA promoter. Binds to the KCNIP2 promoter and regulates KCNIP2 circadian expression in the heart (By similarity). Is a repressor of CCN2 expression, involved in the control of cardiac fibrosis. It is also involved in the control of cardiac hypertrophy acting through the inhibition of MEF2A and GATA4 (By similarity). Involved in podocyte differentiation (By similarity). Inhibits MYOCD activity. Is a negative regulator of TP53 acetylation. Inhibits NF-kappa-B activation through repression of EP300-dependent RELA acetylation.[UniProtKB/Swiss-Prot Function]

Protein Families: Transcription Factors

Product images:



Coomassie blue staining of purified KLF15 protein (Cat# [TP307523]). The protein was produced from HEK293T cells transfected with KLF15 cDNA clone (Cat# [RC207523]) using MegaTran 2.0 (Cat# [TT210002]).