

Product datasheet for PH307507

SHQ1 (NM_018130) Human Mass Spec Standard

Product data:

Product Type:	Mass Spec Standards
Description:	SHQ1 MS Standard C13 and N15-labeled recombinant protein (NP_060600)
Species:	Human
Expression Host:	HEK293
Expression cDNA Clone or AA Sequence:	RC207507
Predicted MW:	64.9 kDa
Protein Sequence:	>RC207507 representing NM_018130 Red =Cloning site Green =Tags(s)

MLTPAFDLSQDPDFLTIAIRVPYARVSEFDVYFEGSDFKFKYAKPYFLRLTLPGRIVENGSEQGSYDADKG
 IFTIRLPKETPGQHFEGNMLTALLAPRKSRTAKPLVEEIGASEIPEEVVDDEEFDWEIEQTPCEEVSES
 ALNPQCHYGFGNLRSGVLQRLQDELSVDIDIKDPDFTPAERQKRLAAELAKFDPDHYLADFFEDAEIE
 QILKYNPWWDKYSKMMAFLEKSQEQENHATLVSFSEEEKYQLRKFVNKSYLLDKRACRQVCYSLIDILL
 AYCETRVTEGEKNVESAWNIRKLSPTLCWFETWTNVHDIMVSFGRRVLCYPLRHFKLVMKAYRDTIKI
 LQLGKSAVLKCLLDIHKIFQENDPAYILNDLYISDYCVWIQKVKSKLAALAEALKEVSLTKAQLGLELE
 ELEAAALLVQEEETALKAAHSVSGQQTLCSSSEASDSEDSSVSSGNEDSGSDSEQDELKDSPSETVSS
 LQGPFFLEESSAFLIVDGGVRRNTAIQESDASQGKPLASSWPLGVSGPLIEELGEQLKTTVQVSEPKGTTA
 VNRSNIQERDGCQTPNN

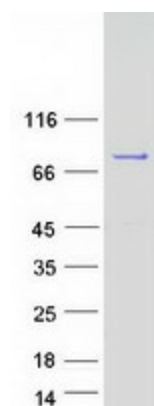
TRTRPLEQKLISEEDLANDILDYKDDDDKV

Tag:	C-Myc/DDK
Purity:	> 80% as determined by SDS-PAGE and Coomassie blue staining
Concentration:	>0.05 µg/µL as determined by microplate BCA method
Labeling Method:	Labeled with [U- ¹³ C ₆ , ¹⁵ N ₄]-L-Arginine and [U- ¹³ C ₆ , ¹⁵ N ₂]-L-Lysine
Buffer:	25 mM Tris-HCl, 100 mM glycine, pH 7.3
Storage:	Store at -80°C. Avoid repeated freeze-thaw cycles.
Stability:	Stable for 3 months from receipt of products under proper storage and handling conditions.
RefSeq:	NP_060600
RefSeq Size:	2861
RefSeq ORF:	1731


[View online »](#)

Synonyms:	GRIM-1; Shq1p
Locus ID:	55164
UniProt ID:	<u>Q6PI26</u>
Cytogenetics:	3p13
Summary:	SHQ1 assists in the assembly of H/ACA-box ribonucleoproteins that function in the processing of ribosomal RNAs, modification of spliceosomal small nuclear RNAs, and stabilization of telomerase (see MIM 602322) (Grozdanov et al., 2009 [PubMed 19383767]). [supplied by OMIM, Dec 2010]

Product images:



Coomassie blue staining of purified SHQ1 protein (Cat# [TP307507]). The protein was produced from HEK293T cells transfected with SHQ1 cDNA clone (Cat# [RC207507]) using MegaTran 2.0 (Cat# [TT210002]).