

Product datasheet for PH307483

TRAPPC1 (NM_021210) Human Mass Spec Standard

Product data:

Product Type:	Mass Spec Standards
Description:	TRAPPC1 MS Standard C13 and N15-labeled recombinant protein (NP_067033)
Species:	Human
Expression Host:	HEK293
Expression cDNA Clone or AA Sequence:	RC207483
Predicted MW:	16.8 kDa
Protein Sequence:	>RC207483 protein sequence Red =Cloning site Green =Tags(s) MTVHNL YLFDRNGVCLHYSEWHRKKQAGIPKEEYKLMYGMLFSIRSFVSKMSPLDMKDGFLAFQTSRYK LHYYETPTGIKVMNTDLGVGPIRDVLLHHIYSALYVELVVKNPCLPLGQTVQSELFRSRLDSYVRSPLPFF SARAG TR TRPLEQ KL I SEED LA AND I LDYK DDDD KV
Tag:	C-Myc/DDK
Purity:	> 80% as determined by SDS-PAGE and Coomassie blue staining
Concentration:	>0.05 µg/µL as determined by microplate BCA method
Labeling Method:	Labeled with [U- 13C6, 15N4]-L-Arginine and [U- 13C6, 15N2]-L-Lysine
Buffer:	25 mM Tris-HCl, 100 mM glycine, pH 7.3
Storage:	Store at -80°C. Avoid repeated freeze-thaw cycles.
Stability:	Stable for 3 months from receipt of products under proper storage and handling conditions.
RefSeq:	NP_067033
RefSeq Size:	837
RefSeq ORF:	435
Synonyms:	BET5; MUM2
Locus ID:	58485
UniProt ID:	Q9Y5R8

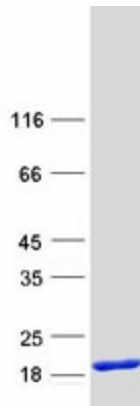


[View online »](#)

Cytogenetics: 17p13.1

Summary: This gene product plays a role in vesicular transport of proteins to the Golgi apparatus from the endoplasmic reticulum. The encoded protein is a component of the multisubunit transport protein particle (TRAPP) complex. Alternative splicing results in multiple transcript variants.[provided by RefSeq, Oct 2009]

Product images:



Coomassie blue staining of purified TRAPPC1 protein (Cat# [TP307483]). The protein was produced from HEK293T cells transfected with TRAPPC1 cDNA clone (Cat# [RC207483]) using MegaTran 2.0 (Cat# [TT210002]).