

Product datasheet for PH307468

C16orf44 (KLHL36) (NM_024731) Human Mass Spec Standard

Product data:

Product Type:	Mass Spec Standards
Description:	KLHL36 MS Standard C13 and N15-labeled recombinant protein (NP_079007)
Species:	Human
Expression Host:	HEK293
Expression cDNA Clone or AA Sequence:	RC207468
Predicted MW:	69.9 kDa
Protein Sequence:	>RC207468 protein sequence Red=Cloning site Green=Tags(s)

MMEGSRQTRVSRPYKISESSKVYRWADHSSTVLQRLNEQRLRGLFCDVVLVADEQVRPAHRNLLAVCSDY
FNSMFTIGMREAFQKEVELIGASYIGLKAVVDFLYGGELVLDGGNIDYVLETAHLLQIWTVVDFCCEYLE
QEVSIEDNYLYLQELASIYSLKRLDAFIDGFILNHFGTLSFTPDFLQNVSMQKLCVYLSSEVQRECEHDL
LQAALQWLTQQPEREAHARQVLENIHFPLIPKNDLLHRVKPAVCSLLPKEANCEGFIEEAVRYHNNLAAQ
PVMQTKRTALRTNQERLLFVGGEVSERCLELSDDTCYLDAKSEQWVKETPLPARRSHHCVAVLGGFIFIA
GGFSRDNGGDAASNLLYRYDPRCKQWIKVASMNQRVDFYLASIEDMLVAIGGRNENGALSSVETYSFK
TDSWSYVAGLPRFTYGHAGTIYKDFVYISGGHDYQIGPYRKNLLCYDHRTDVWEERRPMTTARGWHSMCS
LGDSIYSIGGSDDNIESMERFDVLGVEAYSPQCQWTRVAPLLHANSESGVAVWEGRIYILGGYSWENTA
FSKTVQVYDREADKWSRGVDLPKAIAGGSACVCALEPRPEDKKGKGRHQDRGQ

TRTRPLEQKLISEEDLAANDILDYKDDDDKV

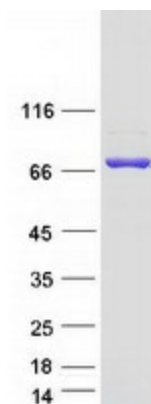
Tag:	C-Myc/DDK
Purity:	> 80% as determined by SDS-PAGE and Coomassie blue staining
Concentration:	>0.05 µg/µL as determined by microplate BCA method
Labeling Method:	Labeled with [U- ¹³ C ₆ , ¹⁵ N ₄]-L-Arginine and [U- ¹³ C ₆ , ¹⁵ N ₂]-L-Lysine
Buffer:	25 mM Tris-HCl, 100 mM glycine, pH 7.3
Storage:	Store at -80°C. Avoid repeated freeze-thaw cycles.
Stability:	Stable for 3 months from receipt of products under proper storage and handling conditions.
RefSeq:	NP_079007
RefSeq Size:	2211
RefSeq ORF:	1848



[View online »](#)

Synonyms:	C16orf44
Locus ID:	79786
UniProt ID:	Q8N4N3
Cytogenetics:	16q24.1
Summary:	Probable substrate-specific adapter of an E3 ubiquitin-protein ligase complex which mediates the ubiquitination and subsequent proteasomal degradation of target proteins. [UniProtKB/Swiss-Prot Function]

Product images:



Coomassie blue staining of purified KLHL36 protein (Cat# [TP307468]). The protein was produced from HEK293T cells transfected with KLHL36 cDNA clone (Cat# [RC207468]) using MegaTran 2.0 (Cat# [TT210002]).