

Product datasheet for PH307467

C10orf88 (NM_024942) Human Mass Spec Standard

Product data:

Product Type:	Mass Spec Standards
Description:	C10orf88 MS Standard C13 and N15-labeled recombinant protein (NP_079218)
Species:	Human
Expression Host:	HEK293
Expression cDNA Clone or AA Sequence:	RC207467
Predicted MW:	49.2 kDa
Protein Sequence:	>RC207467 protein sequence Red=Cloning site Green=Tags(s)

METRTEDGGLTRRPTLASSWDVAGGALTHSLLLTRAGLGPQDFDWEELLAPPAPGQDLVILKRHNHNKDE
NPCFLYLRCGPDGEEIASIGILSSARNMEVYLGEEYCGTSRGKNVCTVLDSEHEKIILYKKNLKLESS
THACKIKLLSFGERQCVFISKVVVHMRSVFANSSTSSPALGSRIDLKVKQTIMESMGSKLSPGAQQLMMD
VRCQQRNCIPIGEQLQSVLGNSGYKHMIGLQSSSTLGTLNKSSSTPFPFRTGLTSGNVTENLQTYIDKST
QLPGGENSTKLDECKVMPQNHSFLENDLKNAMASFLPKKVS DNSNIPNSELLPFLQNLCSQVNHVGNK
TECQENITKHGERILGVGMEEQSICSYLEKILSKNMELMEKKLMDYIDQRIHELQEHIDDKIALLLDLLQ
NPNSPPTGIPLRHYDSGERLSNGER

TRTRPLEQKLI SEEDLAANDILDYKDDDDKV

Tag:	C-Myc/DDK
Purity:	> 80% as determined by SDS-PAGE and Coomassie blue staining
Concentration:	>0.05 µg/µL as determined by microplate BCA method
Labeling Method:	Labeled with [U- ¹³ C ₆ , ¹⁵ N ₄]-L-Arginine and [U- ¹³ C ₆ , ¹⁵ N ₂]-L-Lysine
Buffer:	25 mM Tris-HCl, 100 mM glycine, pH 7.3
Storage:	Store at -80°C. Avoid repeated freeze-thaw cycles.
Stability:	Stable for 3 months from receipt of products under proper storage and handling conditions.
RefSeq:	<u>NP_079218</u>
RefSeq Size:	3102
RefSeq ORF:	1335
Synonyms:	PAAT



[View online »](#)

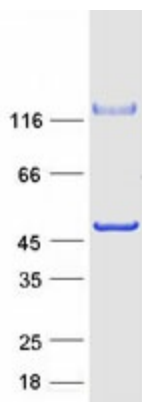
Locus ID: 80007

UniProt ID: [Q9H8K7](#)

Cytogenetics: 10q26.13

Summary: ATPase that regulates mitochondrial ABC transporters ABCB7, ABCB8/MITOSUR and ABCB10 (PubMed:25063848). Regulates mitochondrial ferric concentration and heme biosynthesis and plays a role in the maintenance of mitochondrial homeostasis and cell survival (PubMed:25063848).[UniProtKB/Swiss-Prot Function]

Product images:



Coomassie blue staining of purified C10orf88 protein (Cat# [TP307467]). The protein was produced from HEK293T cells transfected with C10orf88 cDNA clone (Cat# [RC207467]) using MegaTran 2.0 (Cat# [TT210002]).