

Product datasheet for PH307465

RUFY1 (NM_001040451) Human Mass Spec Standard

Product data:

Product Type:	Mass Spec Standards
Description:	RUFY1 MS Standard C13 and N15-labeled recombinant protein (NP_001035541)
Species:	Human
Expression Host:	HEK293
Expression cDNA Clone or AA Sequence:	RC207465
Predicted MW:	69.1 kDa
Protein Sequence:	>RC207465 protein sequence Red=Cloning site Green=Tags(s)

MMEERANLMHMMKLSIKVLLQSALSIGRSLDADHAPLQQFFVVMHCLKHGLKVKKSFIGQNKSFSGPLE
LVEKLCPEASDIATSVRNLPELKTAVGRGRAWLYLALMQKKLADYLVKLVLDNKHLLSEFYEPALMMEEE
GMVIVGLLVGLNVLDANLCLKGEDLDSQVGVDFSLYLKDVQDLGGKEHERITDVLQKQNYVEELNRHL
SCTVGDLTQKIDGLEKTNKLEELSAATDRICSLQEEQQQLREQNELIRERSEKSVETIKQDTKVELET
YKQTRQGLDEMYSDVWVKLKEEKVRLLEKELELQIGMKTEMIAMKLEKDTHEKQDTLVALRQQL
VKAINLQMFHKAQNAESSLQKNEAITSFEGKTNQVMSSMKQMEERLQHSERARQGAERSHKLQQLGG
RIGALQLQLSQLHEQCSSLKELKSEKEQRQALQRELQHEKDTSSLLRMELQQVEGLKRELQDEKAE
LQKICEEQEQALQEMGLHLQSKLKMEDIKEVNQALKGAWLKDDEATHCRQCEKEFSISRRKHHCRCNG
HIFCNTCSSNELALPSYKPKVPRVCDSCHTLLLRCSSTAS

TRTRPLEQKLISEEDLAANDILDYKDDDDKV

Tag:	C-Myc/DDK
Purity:	> 80% as determined by SDS-PAGE and Coomassie blue staining
Concentration:	>0.05 µg/µL as determined by microplate BCA method
Labeling Method:	Labeled with [U- 13C6, 15N4]-L-Arginine and [U- 13C6, 15N2]-L-Lysine
Buffer:	25 mM Tris-HCl, 100 mM glycine, pH 7.3
Storage:	Store at -80°C. Avoid repeated freeze-thaw cycles.
Stability:	Stable for 3 months from receipt of products under proper storage and handling conditions.
RefSeq:	NP_001035541
RefSeq Size:	2674
RefSeq ORF:	1800



[View online »](#)

Synonyms: RABIP4; ZFYVE12

Locus ID: 80230

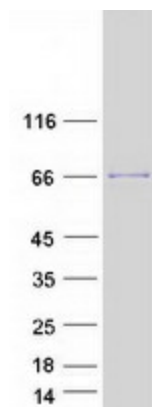
UniProt ID: [Q96T51](#), [A8K7B1](#)

Cytogenetics: 5q35.3

Summary: This gene encodes a protein that contains a RUN domain and a FYVE-type zinc finger domain. The encoded protein binds to phosphatidylinositol-3-phosphate (PI3P) and plays a role in early endosomal trafficking, tethering and fusion through interactions with small GTPases including Rab4, Rab5 and Rab14. Alternatively spliced transcript variants encoding multiple isoforms have been observed for this gene. [provided by RefSeq, Dec 2011]

Protein Pathways: Endocytosis

Product images:



Coomassie blue staining of purified RUFY1 protein (Cat# [TP307465]). The protein was produced from HEK293T cells transfected with RUFY1 cDNA clone (Cat# [RC207465]) using MegaTran 2.0 (Cat# [TT210002]).