

Product datasheet for PH307461

EGFL8 (NM_030652) Human Mass Spec Standard

Product data:

Product Type:	Mass Spec Standards
Description:	EGFL8 MS Standard C13 and N15-labeled recombinant protein (NP_085155)
Species:	Human
Expression Host:	HEK293
Expression cDNA Clone or AA Sequence:	RC207461
Predicted MW:	32.3 kDa
Protein Sequence:	>RC207461 protein sequence Red=Cloning site Green=Tags(s) MGSRAELCTLLGGFSFLLLLIPGEGAKGGSLRESQGVCSKQTLVVPLHYNESYSQPVYKPYLTLCAGRRI CSTYRTMYRVMWREVRREVQQTHAVCCQGWKKRHPGALTCEAICAKPCLNGGVCVRPDQCECAPGWGGKH CHVDVDECRTSITLCSHHCFTAGSFTCGPHDLVLGVDGRTCMEGSPEPPTSASILSVAVREAEKDERA LKQEIHELRLERLEQWAGQAGAWRAVLPVPPEELQPEQVAELWGRGDRIESLSDQVLLLQERLGACS CEDNSLGLGVNHR TRTRPLEQKLISEEDLAANDILDYKDDDDKV
Tag:	C-Myc/DDK
Purity:	> 80% as determined by SDS-PAGE and Coomassie blue staining
Concentration:	>0.05 µg/µL as determined by microplate BCA method
Labeling Method:	Labeled with [U- ¹³ C ₆ , ¹⁵ N ₄]-L-Arginine and [U- ¹³ C ₆ , ¹⁵ N ₂]-L-Lysine
Buffer:	25 mM Tris-HCl, 100 mM glycine, pH 7.3
Storage:	Store at -80°C. Avoid repeated freeze-thaw cycles.
Stability:	Stable for 3 months from receipt of products under proper storage and handling conditions.
RefSeq:	<u>NP_085155</u>
RefSeq Size:	1311
RefSeq ORF:	879
Synonyms:	C6orf8; NG3
Locus ID:	80864



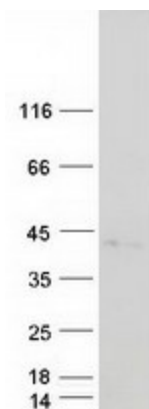
[View online »](#)

UniProt ID: [Q99944](#), [A0A1U9X7N9](#)

Cytogenetics: 6p21.32

Protein Families: Secreted Protein

Product images:



Coomassie blue staining of purified EGFL8 protein (Cat# [TP307461]). The protein was produced from HEK293T cells transfected with EGFL8 cDNA clone (Cat# [RC207461]) using MegaTran 2.0 (Cat# [TT210002]).