

## Product datasheet for PH307434

### FGF1 (NM\_000800) Human Mass Spec Standard

#### Product data:

Product Type:	Mass Spec Standards
Description:	FGF1 MS Standard C13 and N15-labeled recombinant protein (NP_000791)
Species:	Human
Expression Host:	HEK293
Expression cDNA Clone or AA Sequence:	RC207434
Predicted MW:	17.5 kDa
Protein Sequence:	<p>&gt;RC207434 protein sequence</p> <p>Red=Cloning site Green=Tags(s)</p> <p>MAEGEITTF TALTEKFNLP PGNYKKPKLLYCSNGGHFLRILPDGTVDGTRDRSDQHIQLQLSAESVGEVY            IKSTETGQYLAMDTDGLLYGSQTPNEECLFLERLEENHYNTYISKKHAENWVGLKKNGSCKRGPRTHY            GQKAILFLPLPVSSD</p> <p>TRTRPLEQKLISEEDLAANDILDYKDDDDKV</p>
Tag:	C-Myc/DDK
Purity:	> 80% as determined by SDS-PAGE and Coomassie blue staining
Concentration:	>0.05 µg/µL as determined by microplate BCA method
Labeling Method:	Labeled with [U- <sup>13</sup> C <sub>6</sub> , <sup>15</sup> N <sub>4</sub> ]-L-Arginine and [U- <sup>13</sup> C <sub>6</sub> , <sup>15</sup> N <sub>2</sub> ]-L-Lysine
Buffer:	25 mM Tris-HCl, 100 mM glycine, pH 7.3
Storage:	Store at -80°C. Avoid repeated freeze-thaw cycles.
Stability:	Stable for 3 months from receipt of products under proper storage and handling conditions.
RefSeq:	<u>NP_000791</u>
RefSeq Size:	4162
RefSeq ORF:	465
Synonyms:	AFGF; ECGF; ECGF-beta; ECGFA; ECGFB; FGF-1; FGF-alpha; FGFA; GLIO703; HBGF-1; HBGF1
Locus ID:	2246
UniProt ID:	<u>P05230</u>


[View online »](#)

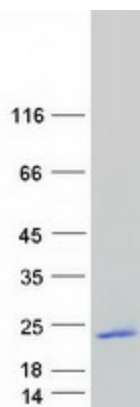
**Cytogenetics:** 5q31.3

**Summary:** The protein encoded by this gene is a member of the fibroblast growth factor (FGF) family. FGF family members possess broad mitogenic and cell survival activities, and are involved in a variety of biological processes, including embryonic development, cell growth, morphogenesis, tissue repair, tumor growth and invasion. This protein functions as a modifier of endothelial cell migration and proliferation, as well as an angiogenic factor. It acts as a mitogen for a variety of mesoderm- and neuroectoderm-derived cells in vitro, thus is thought to be involved in organogenesis. Multiple alternatively spliced variants encoding different isoforms have been described. [provided by RefSeq, Jan 2009]

**Protein Families:** Druggable Genome, Secreted Protein

**Protein Pathways:** MAPK signaling pathway, Melanoma, Pathways in cancer, Regulation of actin cytoskeleton

### Product images:



Coomassie blue staining of purified FGF1 protein (Cat# [TP307434]). The protein was produced from HEK293T cells transfected with FGF1 cDNA clone (Cat# [RC207434]) using MegaTran 2.0 (Cat# [TT210002]).