

Product datasheet for PH307432

Cytochrome P450 3A5 (CYP3A5) (NM_000777) Human Mass Spec Standard

Product data:

Product Type:	Mass Spec Standards
Description:	CYP3A5 MS Standard C13 and N15-labeled recombinant protein (NP_000768)
Species:	Human
Expression Host:	HEK293
Expression cDNA Clone or AA Sequence:	RC207432
Predicted MW:	57.1 kDa
Protein Sequence:	>RC207432 protein sequence Red=Cloning site Green=Tags(s)

MDLIPNLAVETWLLLAVSLVLLYLYGTRTHGLFKRLGIPGPTPLLLGNVLSYRQGLWKFDETCYKYGK
MWGTYEGQLPVLAITDPDVIRTVLVKECYSVFTNRRSLGPVGMKSAISLAEDDEWKIRISLLSPTFTSG
KLKEMFPIIAQYGDVLRNLRREAEKGPVTLKDFGAYSMDVITGTSFGVNIDSLNPNQDPFVESTKKF
LKFGFLDPLFLSIIILFPFLTPVFEALNVSFLPKDTINFLSKSVNRMKKSRLNDKQKHRLDFLQMLIDSQN
SKETESHKALSDELEAAQSIIFIFAGYETTSSVLSFTLYELATHPDVQQKLQKEIDAVLPNKAPPTYDAV
VQMEYLDMVVNETLRLFPVAIRLERTCKKDVEINGVFIKGSVMVVIPTYALHHPKYWTEPEEFRPERFS
KKKDSIDPYIYTPFGTGPRNCIGMRFALMNMKALIRVLQNF SFKPKKETQIPLKLDTQGLLQPEKPIVL
KVDSRDGTLSGE

TRTRPLEQKLI SEEDLAANDILDYKDDDDKV

Tag:	C-Myc/DDK
Purity:	> 80% as determined by SDS-PAGE and Coomassie blue staining
Concentration:	>0.05 µg/µL as determined by microplate BCA method
Labeling Method:	Labeled with [U- 13C6, 15N4]-L-Arginine and [U- 13C6, 15N2]-L-Lysine
Buffer:	25 mM Tris-HCl, 100 mM glycine, pH 7.3
Storage:	Store at -80°C. Avoid repeated freeze-thaw cycles.
Stability:	Stable for 3 months from receipt of products under proper storage and handling conditions.
RefSeq:	<u>NP_000768</u>
RefSeq Size:	1755
RefSeq ORF:	1506



[View online »](#)

Synonyms: CP35; CYP11A5; P450PCN3; PCN3

Locus ID: 1577

UniProt ID: [P20815](#)

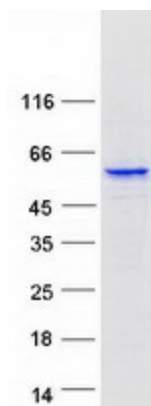
Cytogenetics: 7q22.1

Summary: This gene encodes a member of the cytochrome P450 superfamily of enzymes. The cytochrome P450 proteins are monooxygenases which catalyze many reactions involved in drug metabolism and synthesis of cholesterol, steroids and other lipids. The encoded protein metabolizes drugs as well as the steroid hormones testosterone and progesterone. This gene is part of a cluster of cytochrome P450 genes on chromosome 7q21.1. Two pseudogenes of this gene have been identified within this cluster on chromosome 7. Expression of this gene is widely variable among populations, and a single nucleotide polymorphism that affects transcript splicing has been associated with susceptibility to hypertension. Alternative splicing results in multiple transcript variants. [provided by RefSeq, Apr 2014]

Protein Families: Druggable Genome, P450, Transmembrane

Protein Pathways: Drug metabolism - cytochrome P450, Drug metabolism - other enzymes, Linoleic acid metabolism, Metabolic pathways, Metabolism of xenobiotics by cytochrome P450, Retinol metabolism

Product images:



Coomassie blue staining of purified CYP3A5 protein (Cat# [TP307432]). The protein was produced from HEK293T cells transfected with CYP3A5 cDNA clone (Cat# [RC207432]) using MegaTran 2.0 (Cat# [TT210002]).