

Product datasheet for PH307397

CPA5 (NM_080385) Human Mass Spec Standard

Product data:

Product Type:	Mass Spec Standards
Description:	CPA5 MS Standard C13 and N15-labeled recombinant protein (NP_525124)
Species:	Human
Expression Host:	HEK293
Expression cDNA Clone or AA Sequence:	RC207397
Predicted MW:	49 kDa
Protein Sequence:	>RC207397 protein sequence Red=Cloning site Green=Tags(s)
	<p>MQGTPGGGTRPGPSPVDRRTLLVFSFILAAALGQMNTGDQVLRVLAKDEKQLSLLGDLEGLKPQKVDWF RGPAPRSLPVDMRVPFSELKDIKAYLESHGLAYSIMIKDIQVLLDEERQAMAKSRRLERSTNSFSYSSYH TLEEIYSWIDNFVMEHSDIVSKIQIGNSFENQSILVLKFGSTGGRHPAIWIDTGIHSREWITHTATGIWTA NKIVSDYKDRVLTDLNAMDIFIELVTNPDGFAFTHSMNRLWRKNKSIRPGIFCIGVDLNRNWKSGFGG NGSNSNPCSEYHGPSPQSEPEVAIVNFITAHGNFKALISIHYSQMLMYPYGRSLDPVSNQRELYDLA KDAVEALYKVHGIEYIFGSISTTLYVASGITVDWAYDSGIKYAFSEFLRDTGQYGFLLPATQIIPTAQET WMALRTIMEHTLNHPY</p> <p>TRTRPLEQKLISEEDLAANDILDYKDDDDKV</p>
Tag:	C-Myc/DDK
Purity:	> 80% as determined by SDS-PAGE and Coomassie blue staining
Concentration:	>0.05 µg/µL as determined by microplate BCA method
Labeling Method:	Labeled with [U- ¹³ C ₆ , ¹⁵ N ₄]-L-Arginine and [U- ¹³ C ₆ , ¹⁵ N ₂]-L-Lysine
Buffer:	25 mM Tris-HCl, 100 mM glycine, pH 7.3
Storage:	Store at -80°C. Avoid repeated freeze-thaw cycles.
Stability:	Stable for 3 months from receipt of products under proper storage and handling conditions.
RefSeq:	<u>NP_525124</u>
RefSeq Size:	2078
RefSeq ORF:	1308
Locus ID:	93979



[View online »](#)

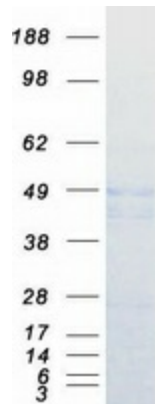
UniProt ID: [Q8WXQ8](#), [A4D1M2](#)

Cytogenetics: 7q32.2

Summary: Carboxypeptidases have functions ranging from digestion of food to selective biosynthesis of neuroendocrine peptides. Members of the A/B subfamily of carboxypeptidases, such as CPA5, contain an approximately 90-amino acid pro region that assists in the folding of the active carboxypeptidase domain. Cleavage of the pro region activates the enzyme (Wei et al., 2002 [PubMed 11836249]).[supplied by OMIM, Mar 2008]

Protein Families: Druggable Genome, Secreted Protein

Product images:



Coomassie blue staining of purified CPA5 protein (Cat# [TP307397]). The protein was produced from HEK293T cells transfected with CPA5 cDNA clone (Cat# [RC207397]) using MegaTran 2.0 (Cat# [TT210002]).