

Product datasheet for PH307346

P cadherin (CDH3) (NM_001793) Human Mass Spec Standard

Product data:

Product Type:	Mass Spec Standards
Description:	CDH3 MS Standard C13 and N15-labeled recombinant protein (NP_001784)
Species:	Human
Expression Host:	HEK293
Expression cDNA Clone or AA Sequence:	RC207346
Predicted MW:	91.5 kDa
Protein Sequence:	>RC207346 protein sequence Red=Cloning site Green=Tags(s)

MGLPRGPLASLLLLQVCWLQCAASEPCRAVFREAEVTLAAGGAEQEPGQALGKVFMGCPGQEPALFSTDN
DDFTVRNGETVQERRSLKERNPLKIFPSKRILRRHKRDVWVAPI SVPENGGKPFQRLNQLKSNKDRDTK
IFYSITGPGADSPPEGVFAVEKETGWLLLNKPLDREEIAKYELFGHAVSENGASVEDPMNISIIIVTDQND
HKPKFTQDTRFGSVLEGLVPGTSVMQMTATDEDDAIYTYNGVVAYSISHSQEPKDPHLMFTIHRSTGTIS
VISSGLDREKVPEYTLTIQATDMDGDGSTTTAVAVVEILDANDNAPMFDPPQKYEAHVPENAVGHEVQRLT
VTDLDAPNSPAWRATYLMGGDDGDHFTITTHPESNQGILTTRKGLDFEAKNQHTLYVEVTNEAPFVLKL
PTSTATIVVHVEDVNEAPVFPVPSKVVEVQEGIPTGEPVCVYTAEDPKENQKISYRILRDPAGWLAMPD
DSGQVTAVGTLDREDEQFVRNNIYEMVLAAMDNGSPPTTGTLLLLTLIDVNDHGPVPEPRQITICNQSP
VRQVLNITDKDLSPHTSFQAQLTDDSDIYWTAEVNEEGDVTVLSLKKFLKQDQTYDVLHSLSDHGKNEQL
TVIRATVCDCHGHVETCPGPWGGFIPVLAGVALLFLLLVLVLRKKRRIKEPLLLPEDDTRDNVYF
YGEEGGGEEDQDYDITQLHRGLEARPEVLRNDVAPTIIPTPMYRPRPANPDEIGNFIIENLKAANTDPT
APPYDTLLVFDYEGSGSDAASLSSLTSSASDQDQDYDLNEWGSRFKKLADMYGGGEDD

TRTRPLEQKLI SEEDLAANDILDYKDDDDKV

Tag:	C-Myc/DDK
Purity:	> 80% as determined by SDS-PAGE and Coomassie blue staining
Concentration:	>0.05 µg/µL as determined by microplate BCA method
Labeling Method:	Labeled with [U- ¹³ C ₆ , ¹⁵ N ₄]-L-Arginine and [U- ¹³ C ₆ , ¹⁵ N ₂]-L-Lysine
Buffer:	25 mM Tris-HCl, 100 mM glycine, pH 7.3
Storage:	Store at -80°C. Avoid repeated freeze-thaw cycles.
Stability:	Stable for 3 months from receipt of products under proper storage and handling conditions.
RefSeq:	<u>NP_001784</u>



[View online >](#)

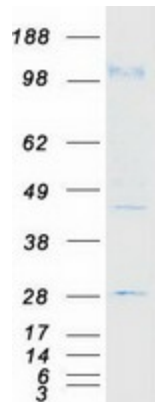
RefSeq Size:	4276
RefSeq ORF:	2487
Synonyms:	CDHP; HJMD; PCAD
Locus ID:	1001
UniProt ID:	P22223
Cytogenetics:	16q22.1

Summary: This gene encodes a classical cadherin of the cadherin superfamily. Alternative splicing results in multiple transcript variants, at least one of which encodes a preproprotein that is proteolytically processed to generate the mature glycoprotein. This calcium-dependent cell-cell adhesion protein is comprised of five extracellular cadherin repeats, a transmembrane region and a highly conserved cytoplasmic tail. This gene is located in a gene cluster in a region on the long arm of chromosome 16 that is involved in loss of heterozygosity events in breast and prostate cancer. In addition, aberrant expression of this protein is observed in cervical adenocarcinomas. Mutations in this gene are associated with hypotrichosis with juvenile macular dystrophy and ectodermal dysplasia, ectrodactyly, and macular dystrophy syndrome (EEMS). [provided by RefSeq, Nov 2015]

Protein Families: Druggable Genome, Transmembrane

Protein Pathways: Cell adhesion molecules (CAMs)

Product images:



Coomassie blue staining of purified CDH3 protein (Cat# [TP307346]). The protein was produced from HEK293T cells transfected with CDH3 cDNA clone (Cat# [RC207346]) using MegaTran 2.0 (Cat# [TT210002]).