

Product datasheet for PH307337

CRY2 (NM_021117) Human Mass Spec Standard

Product data:

Product Type:	Mass Spec Standards
Description:	CRY2 MS Standard C13 and N15-labeled recombinant protein (NP_066940)
Species:	Human
Expression Host:	HEK293
Expression cDNA Clone or AA Sequence:	RC207337
Predicted MW:	66.9 kDa
Protein Sequence:	>RC207337 protein sequence Red=Cloning site Green=Tags(s)

MAATVATAAAVAPAPAPGTDSASSVHWFRKGLRLHDPALLAAVRGARCVRVYILDWPFAASSVGINR
WRFLLQSLEDLDTSLRKLNSRLFVVRGQPADVFPRLFKEWGVTRLTFEYDSEPFGERDAAIMKMAKEAG
VEVVTENSHTLYDLDRILELNGQKPLTYKRFQAIISRMELPKKPVGLVTSQQMESCRAEIQENHDETYG
VPSLEELGFPTEGLGPAVWQGGETEALARLDKHLERKAWVANYERPRMNANLLASPTGLSPYLRFGCLS
CRLFYRRLWDLYKKVKNSTPPLSLFGQLLWREFFYTAATNNPRFDRMEGNPICIQIPWDRNPEALAKWA
EGKTGFPWIDAIMTQLRQEGWIHHLARHAVACFLTRGDLWVSWESGVRVDFELLDADFVNAGSWMWLS
CSAFFQQFFHCYCPVGFGRRTDPSGDYIRRYLPKLKAFPSRYIYEPWNAPESIQKAAKCIIGVDYPRPIV
NHAETSRNLNIERMKQIYQQLSRYRGLCLLASVPSCVEDLSHPVAEPSSSQAGSMSSAGPRPLPSGPASPK
RKLEAAEPPGEELSKRARVAELPTPELPSKDA

TRTRPLEQKLISEEDLAANDILDYKDDDDKV

Tag:	C-Myc/DDK
Purity:	> 80% as determined by SDS-PAGE and Coomassie blue staining
Concentration:	>0.05 µg/µL as determined by microplate BCA method
Labeling Method:	Labeled with [U- ¹³ C ₆ , ¹⁵ N ₄]-L-Arginine and [U- ¹³ C ₆ , ¹⁵ N ₂]-L-Lysine
Buffer:	25 mM Tris-HCl, 100 mM glycine, pH 7.3
Storage:	Store at -80°C. Avoid repeated freeze-thaw cycles.
Stability:	Stable for 3 months from receipt of products under proper storage and handling conditions.
RefSeq:	NP_066940
RefSeq Size:	4204
RefSeq ORF:	1779



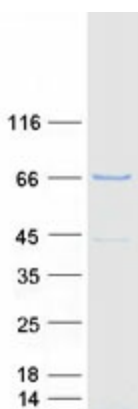
[View online »](#)

Synonyms: HCRY2; PHLL2
Locus ID: 1408
UniProt ID: [Q49AN0](#), [A0A0D2X7Z3](#), [A2I2P1](#)
Cytogenetics: 11p11.2

Summary: This gene encodes a flavin adenine dinucleotide-binding protein that is a key component of the circadian core oscillator complex, which regulates the circadian clock. This gene is upregulated by CLOCK/ARNTL heterodimers but then represses this upregulation in a feedback loop using PER/CRY heterodimers to interact with CLOCK/ARNTL. Polymorphisms in this gene have been associated with altered sleep patterns. The encoded protein is widely conserved across plants and animals. Two transcript variants encoding different isoforms have been found for this gene. [provided by RefSeq, Feb 2014]

Protein Families: Druggable Genome
Protein Pathways: Circadian rhythm - mammal

Product images:



Coomassie blue staining of purified CRY2 protein (Cat# [TP307337]). The protein was produced from HEK293T cells transfected with CRY2 cDNA clone (Cat# [RC207337]) using MegaTran 2.0 (Cat# [TT210002]).