

## Product datasheet for PH307303

### PLCL2 (NM\_015184) Human Mass Spec Standard

#### Product data:

Product Type:	Mass Spec Standards
Description:	PLCL2 MS Standard C13 and N15-labeled recombinant protein (NP_055999)
Species:	Human
Expression Host:	HEK293
Expression cDNA Clone or AA Sequence:	RC207303
Predicted MW:	113.7 kDa
Protein Sequence:	>RC207303 protein sequence Red=Cloning site Green=Tags(s)

MPTEKKISSASDCINSMVEGSELKRVRSNSRIYHRYFLLDADMQSLRWEPSSKKDSEKAKIDIKSIKEVRT  
GKNTDIFRNSGIDRISEDCAFVSVIYGENYESLDLVANSADVANIWVTGLRYLISYGKHTLDMLESSQDN  
MRTSWVSQMFSEIDVDNLGHITLCNAVQCIRNLNPGLKTSKIELKFKELHKSKDKAGTEVTKKEEIEVFH  
ELCTRPEIYFLLVQFSSNKEFLDTKDLMMFLEAEQGVAHINEEISLEIIHKYEPSKEGQEKGWSIDGFT  
NYLMSPDCYIFDPEHKKVCQDMKQPLSHYFINSSHNTYLIEDQFRGSPDITGYIRALKMGCRSVELDVWD  
GPDNEPVIYTGHTMTSQIVFRSVIDIINKYAFFASEYPLILCLENHCSIKQQKVMVQHMKKLLGDKLYTT  
SPNVEESYLPSPDVLLKGIKILIKAKKLSNCSGVEGDVTEDEGAEMSQRMGKENMEQPNNVPVKRFQLCK  
ELSELVSICKSVQFKEFQMSFQVQKYWEVCSFNEVLASKYANENPGDFVNYNKRFLARVFPSPMRIDSSN  
MNPQDFWKCGCQIVAMNFQTPGLMMDLNIQWFRQNGCGYVLRPAIMREEVSFFSVNTKDSVPGVSPQLL  
HIKIIISGNFQPKPGSGAKGDVVDVYVYVEIHGIPADCAEQRTKTVHQNGDAHIFDESFEFQINLPELAM  
VRFVVLDDDYIGDEFIGQYTIPEFLQTYRHYVPLQSLTGEVLAHASLFVHVAITNRRGGGKPRKRGLSV  
RKGGKSREYASLRTLWIKTVDEVFKNAQPPIRDATDLRENMQNAVVSFKELCGLSSVANLMQCMLAVSPR  
FLGPDNTPLVVLNLSEQYPTMELQGI VPEVLKKIVTTYDMMIQSLKAL IENADAVYEKIVHCQAAMEFH  
EHLHSIGTKEGLKERLQKAVESFTWNI TILKGQADLLKYAKNETLENLKQIHFAAVSCGLNKPGETENAD  
VQKPRRSLEVIPEKANDETGE

TRTRPLEQKLI SEEDLAANDILDYKDDDDKV

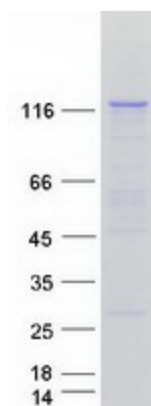
Tag:	C-Myc/DDK
Purity:	> 80% as determined by SDS-PAGE and Coomassie blue staining
Concentration:	>0.05 µg/µL as determined by microplate BCA method
Labeling Method:	Labeled with [U- <sup>13</sup> C <sub>6</sub> , <sup>15</sup> N <sub>4</sub> ]-L-Arginine and [U- <sup>13</sup> C <sub>6</sub> , <sup>15</sup> N <sub>2</sub> ]-L-Lysine
Buffer:	25 mM Tris-HCl, 100 mM glycine, pH 7.3
Storage:	Store at -80°C. Avoid repeated freeze-thaw cycles.



[View online »](#)

Stability:	Stable for 3 months from receipt of products under proper storage and handling conditions.
RefSeq:	<a href="#">NP_055999</a>
RefSeq Size:	3964
RefSeq ORF:	3003
Synonyms:	PLCE2
Locus ID:	23228
UniProt ID:	<a href="#">Q9UPR0</a>
Cytogenetics:	3p24.3
Summary:	May play an role in the regulation of Ins(1,4,5)P3 around the endoplasmic reticulum. [UniProtKB/Swiss-Prot Function]
Protein Families:	Druggable Genome

### Product images:



Coomassie blue staining of purified PLCL2 protein (Cat# [TP307303]). The protein was produced from HEK293T cells transfected with PLCL2 cDNA clone (Cat# [RC207303]) using MegaTran 2.0 (Cat# [TT210002]).